

\$1,788,020 - 400, 500, 600 Shantz Drive, Didsbury

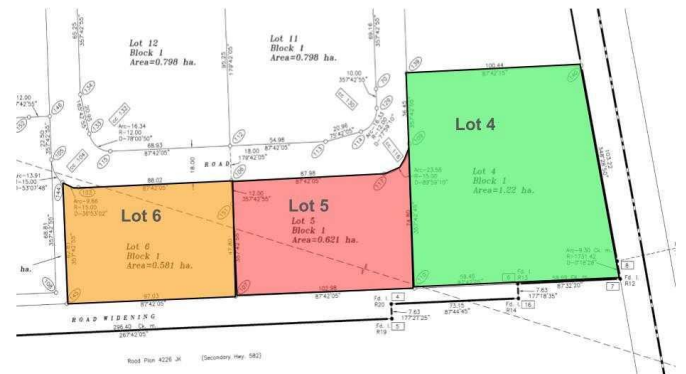
MLS® #A2123791

\$1,788,020

0 Bedroom, 0.00 Bathroom,
Land on 5.98 Acres

NONE, Didsbury, Alberta

Three commercial lots for sale in Shantz Village Phase 2 totalling 5.98 Acres. Asking price is \$299,000 per Acre. Lot 4 (400 Shantz Village 2024 tax: \$8,340.00 | Size: 3.010 AC | LINC: 0035569277). Lot 5 (500 Shantz Village 2024 tax: \$4,239.44 | Size: 1.530 AC | LINC: 0035569285) Lot 6 (600 Shantz Village 2024 tax: \$3,990.09 | Size: 1.440 AC | LINC: 0035569293). Land Use: C-1 General Commercial. Anchored By Buy-Low Foods, Dollarama & Pet Valu. Retail stores, walking paths, mixed use commercial. Proposed Lliquor store and Cannabis outlet. Didsbury is located just off of QEII Highway, approx 70 km from the Calgary International Airport, or 47 minutes drive. There is a 9-hole golf course, aquatic centre, two ice rinks, softball/baseball diamonds, parks and playgrounds. There is also a hospital, an RCMP detachment as well as the Olds-Didsbury Airport, primarily for small aircraft, general aviation, and a helipad for STARS air ambulance to land.



Essential Information

MLS® #	A2123791
Price	\$1,788,020
Bathrooms	0.00
Acres	5.98
Type	Land
Sub-Type	Commercial Land
Status	Active

Community Information

Address	400, 500, 600 Shantz Drive
Subdivision	NONE
City	Didsbury
County	Mountain View County
Province	Alberta
Postal Code	T0M 0W0

Exterior

Lot Description	Irregular Lot, Level, See Remarks, Views
-----------------	--

Additional Information

Date Listed	May 18th, 2024
Days on Market	465
Zoning	C-1

Listing Details

Listing Office	Century 21 Masters
----------------	--------------------

Data is supplied by Pillar 9â„¢ MLS® System. Pillar 9â„¢ is the owner of the copyright in its MLS® System. Data is deemed reliable but is not guaranteed accurate by Pillar 9â„¢. The trademarks MLS®, Multiple Listing Service® and the associated logos are owned by The Canadian Real Estate Association (CREA) and identify the quality of services provided by real estate professionals who are members of CREA. Used under license.