

# \$64,900 - 28, 53209 Range Road 183, Rural Yellowhead County

MLS® #A2138474

**\$64,900**

4 Bedroom, 2.00 Bathroom, 1,590 sqft  
Mobile on 0.00 Acres

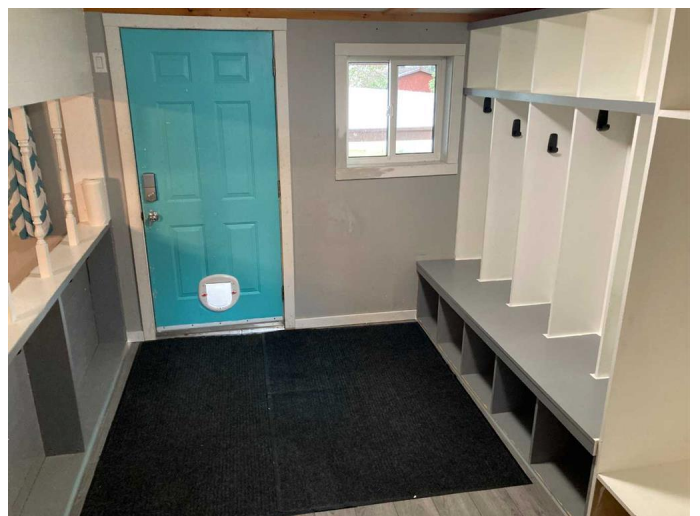
NONE, Rural Yellowhead County, Alberta

This 4 bedroom 2 bathroom home includes large kitchen with lots of counter space and large pantry and a primary bedroom oasis with gas fireplace, large ensuite and private deck. Kitchen was renovated in 2019 and includes drinking water filtration and great spice storage beside the fridge. This home is for its next family with "locker style" storage for everyone, greenhouse for the gardener and fully fenced yard for children and pets. Relax under the covered deck or out by the firepit. Large lot with many trees in a family friendly mobile park.

Built in 1979

## Essential Information

MLS® #	A2138474
Price	\$64,900
Bedrooms	4
Bathrooms	2.00
Full Baths	2
Square Footage	1,590
Acres	0.00
Year Built	1979
Type	Mobile
Sub-Type	Mobile
Style	Single Wide Mobile Home
Status	Active



## Community Information

Address	28, 53209 Range Road 183
Subdivision	NONE
City	Rural Yellowhead County
County	Yellowhead County
Province	Alberta
Postal Code	T7E 3B2

## Amenities

Utilities	Electricity Connected, Natural Gas Connected, Water Connected, Fiber Optics Available, Garbage Collection, High Speed Internet Available, Sewer Connected
Parking Spaces	4
Parking	Gravel Driveway, Parking Pad

## Interior

Appliances	Dishwasher, Dryer, Refrigerator, Washer, Window Coverings, Microwave, Range Hood, Stove(s)
Heating	Natural Gas, Floor Furnace
Fireplace	Yes
# of Fireplaces	1
Fireplaces	Gas, Master Bedroom

## Exterior

Roof	Metal
------	-------

## Additional Information

Date Listed	June 6th, 2024
Days on Market	330

## Listing Details

Listing Office	ROYAL LEPAGE EDSON REAL ESTATE
----------------	--------------------------------

Data is supplied by Pillar 9â„¢ MLS® System. Pillar 9â„¢ is the owner of the copyright in its MLS® System. Data is deemed reliable but is not guaranteed accurate by Pillar 9â„¢. The trademarks MLS®, Multiple Listing Service® and the associated logos are owned by The Canadian Real Estate Association (CREA) and identify the quality of services provided by real estate professionals who are members of CREA. Used under license.