

\$599,000 - 58 Springbank Heights Drive, Rural Rocky View County

MLS® #A2171433

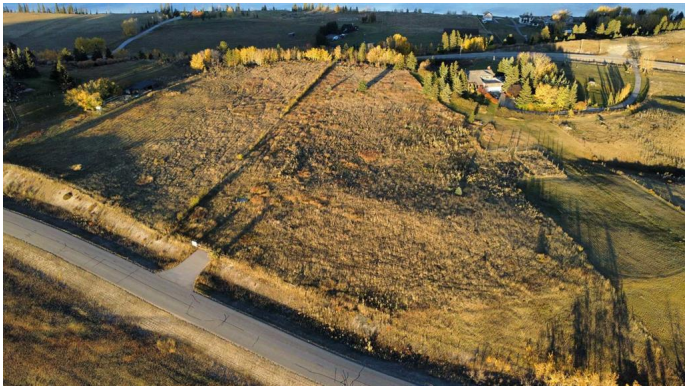
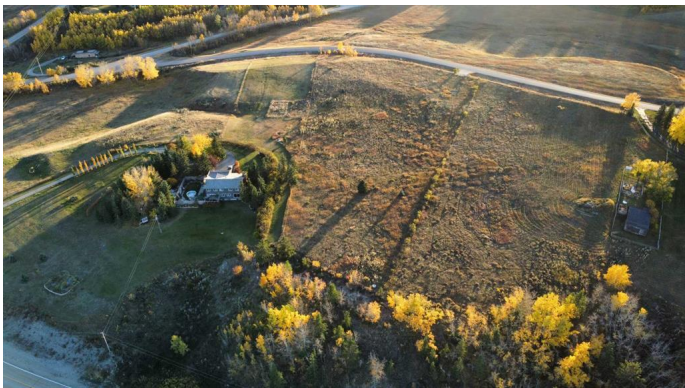
\$599,000

0 Bedroom, 0.00 Bathroom,
Land on 2.10 Acres

Springbank Heights, Rural Rocky View County, Alberta

Discover the perfect balance of luxury and nature with this exceptional property, offering stunning mountain views and a direct sightline to Bearspaw. This walkout basement lot is ideal for building your dream home, with no condominium or water co-op fees. Youâ€™ll enjoy the benefits of a reliable water well and direct access to some of the regionâ€™s most coveted amenities.

Located near the renowned Springbank and Mickelson golf courses, and just minutes away from the future Costco, set to open in 2025, this location provides the perfect blend of convenience and serenity. Families will appreciate the proximity to top-rated Edge and Springbank schools, while outdoor enthusiasts will love the propertyâ€™s adjacency to a protected wildlife corridor on the west side, ensuring no future development in that space. This is your opportunity to create a peaceful retreat while staying close to all the essentials.



Essential Information

MLS® #	A2171433
Price	\$599,000
Bathrooms	0.00
Acres	2.10
Type	Land

Sub-Type	Residential Land
Status	Active

Community Information

Address	58 Springbank Heights Drive
Subdivision	Springbank Heights
City	Rural Rocky View County
County	Rocky View County
Province	Alberta
Postal Code	T3Z 1C5

Additional Information

Date Listed	October 9th, 2024
Days on Market	213
Zoning	R-CRD

Listing Details

Listing Office	RE/MAX House of Real Estate
----------------	-----------------------------

Data is supplied by Pillar 9â„¢ MLS® System. Pillar 9â„¢ is the owner of the copyright in its MLS® System. Data is deemed reliable but is not guaranteed accurate by Pillar 9â„¢. The trademarks MLS®, Multiple Listing Service® and the associated logos are owned by The Canadian Real Estate Association (CREA) and identify the quality of services provided by real estate professionals who are members of CREA. Used under license.