

\$630,000 - 5203 Lakeshore Drive, Sylvan Lake

MLS® #A2183121

\$630,000

0 Bedroom, 0.00 Bathroom,
Land on 0.22 Acres

Downtown, Sylvan Lake, Alberta

Downtown development land. Could be commercial or multi-family or both. Across the street from the lake.



Essential Information

MLS® #	A2183121
Price	\$630,000
Bathrooms	0.00
Acres	0.22
Type	Land
Sub-Type	Commercial Land
Status	Active

Community Information

Address	5203 Lakeshore Drive
Subdivision	Downtown
City	Sylvan Lake
County	Red Deer County
Province	Alberta
Postal Code	T4S 1E8

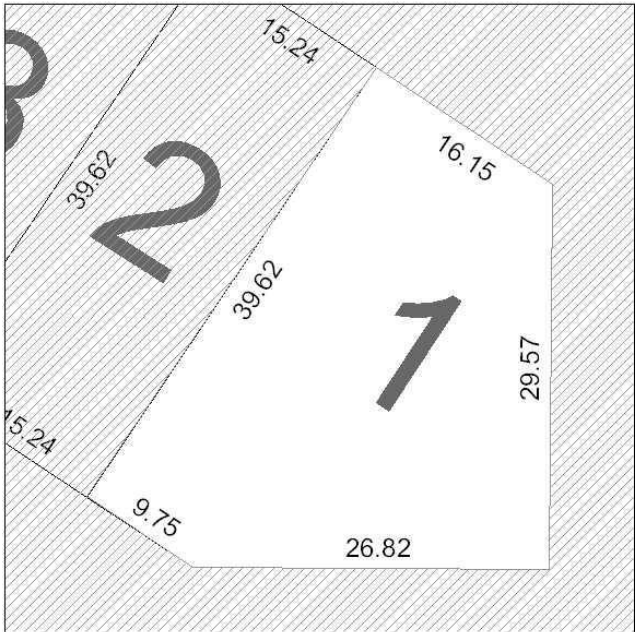
Additional Information

Date Listed	December 11th, 2024
Days on Market	142
Zoning	WDC

Listing Details

Listing Office	Greater Property Group
----------------	------------------------

Data is supplied by Pillar 9â„¢ MLS® System. Pillar 9â„¢ is the owner of the copyright in its MLS® System. Data is



deemed reliable but is not guaranteed accurate by Pillar 9â„¸. The trademarks MLS®®, Multiple Listing Service® and the associated logos are owned by The Canadian Real Estate Association (CREA) and identify the quality of services provided by real estate professionals who are members of CREA. Used under license.