

\$1,800,000 - Horse Creek Road, Rural Rocky View County

MLS® #A2190928

\$1,800,000

0 Bedroom, 0.00 Bathroom,
Land on 164.00 Acres

NONE, Rural Rocky View County, Alberta

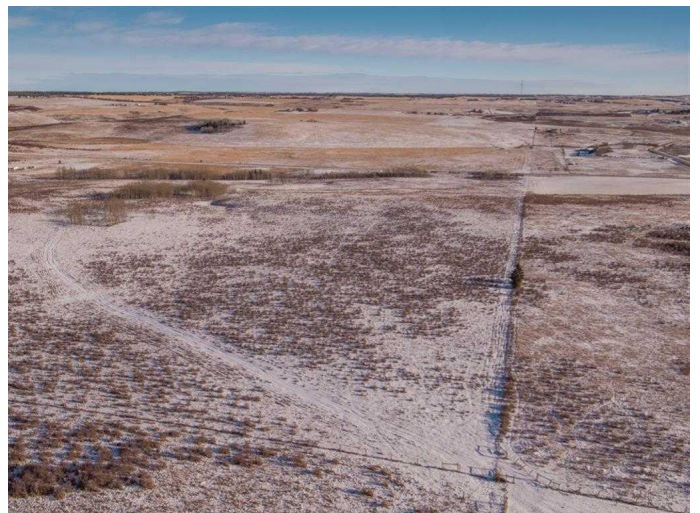
Incredible scenic 1/4 section of land. There is also an adjoining 1/4 section of land that can be purchased in conjunction with this one. Potentially 1/2 section of land only minutes from Cochrane off of Horse Creek Road. Rolling hills, lush greens and groups of trees cover the land. Suitable for grazing/agriculture now or as an investment/development. The last water test yielded an amazing 60 GPM. Nearby subdivisions have smaller 4 acre parcel rural residential homes. The potential and opportunities are endless. owner will look at all offers

Essential Information

MLS® #	A2190928
Price	\$1,800,000
Bathrooms	0.00
Acres	164.00
Type	Land
Sub-Type	Residential Land
Status	Active

Community Information

Address	Horse Creek Road
Subdivision	NONE
City	Rural Rocky View County
County	Rocky View County



Province	Alberta
Postal Code	T0L 0W0

Additional Information

Date Listed	January 29th, 2025
Days on Market	209
Zoning	RF

Listing Details

Listing Office	RE/MAX House of Real Estate
----------------	-----------------------------

Data is supplied by Pillar 9â„¢ MLS® System. Pillar 9â„¢ is the owner of the copyright in its MLS® System. Data is deemed reliable but is not guaranteed accurate by Pillar 9â„¢. The trademarks MLS®, Multiple Listing Service® and the associated logos are owned by The Canadian Real Estate Association (CREA) and identify the quality of services provided by real estate professionals who are members of CREA. Used under license.