

# \$159,000 - 108 3 Avenue W, Neilburg

MLS® #A2192603

**\$159,000**

4 Bedroom, 2.00 Bathroom, 903 sqft

Residential on 0.34 Acres

NONE, Neilburg, Saskatchewan

Looking for quiet tranquility that only a small town can offer? Then look no further- this one's for you. This 4 bed 2 bath home in Neilburg is in very good condition and situated on a HUGE lot. The south-facing home has a very bright open feel and outside you'll find a large deck. The metal roof should make for very low maintenance. Move in, relax and be proud of the decision you made in purchasing this home

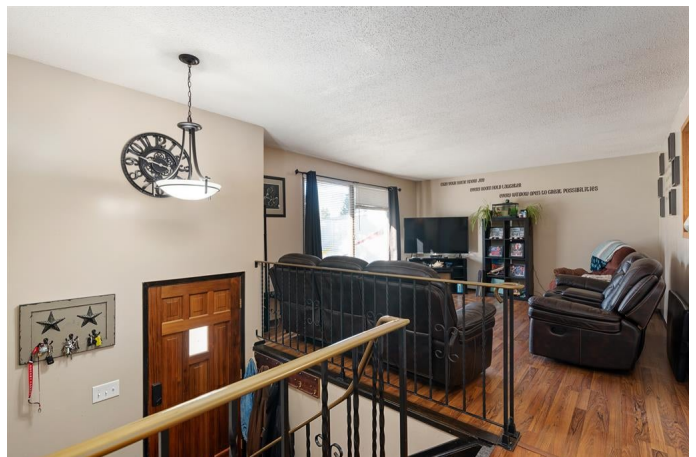
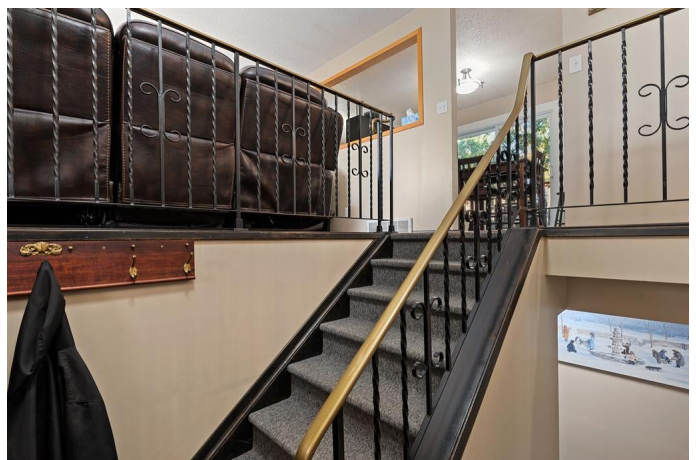
Built in 1972

## Essential Information

MLS® #	A2192603
Price	\$159,000
Bedrooms	4
Bathrooms	2.00
Full Baths	2
Square Footage	903
Acres	0.34
Year Built	1972
Type	Residential
Sub-Type	Detached
Style	Bi-Level
Status	Active

## Community Information

Address	108 3 Avenue W
Subdivision	NONE



City	Neilburg
County	Saskatchewan
Province	Saskatchewan
Postal Code	S0M 2C0

### **Amenities**

Parking Spaces	1
Parking	Gravel Driveway, Off Street

### **Interior**

Interior Features	Laminate Counters, Storage
Appliances	Dishwasher, Microwave, Range Hood, Refrigerator, Stove(s), Washer/Dryer, Window Coverings
Heating	Forced Air, Natural Gas
Cooling	None
Has Basement	Yes
Basement	Finished, Full

### **Exterior**

Exterior Features	None
Lot Description	Lawn, Rectangular Lot, Front Yard, Many Trees
Roof	Metal
Construction	Composite Siding, Concrete, Wood Frame
Foundation	Poured Concrete

### **Additional Information**

Date Listed	February 5th, 2025
Days on Market	86
Zoning	R1

### **Listing Details**

Listing Office	CENTURY 21 DRIVE
----------------	------------------

Data is supplied by Pillar 9â„¢ MLSÂ® System. Pillar 9â„¢ is the owner of the copyright in its MLSÂ® System. Data is deemed reliable but is not guaranteed accurate by Pillar 9â„¢. The trademarks MLSÂ®, Multiple Listing ServiceÂ® and the associated logos are owned by The Canadian Real Estate Association (CREA) and identify the quality of services provided by real estate professionals who are members of CREA. Used under license.