

# \$1,799,999 - 280156 Township Road 241a, Chestermere

MLS® #A2193950

**\$1,799,999**

0 Bedroom, 0.00 Bathroom,  
Land on 15.50 Acres

East Chestermere, Chestermere, Alberta

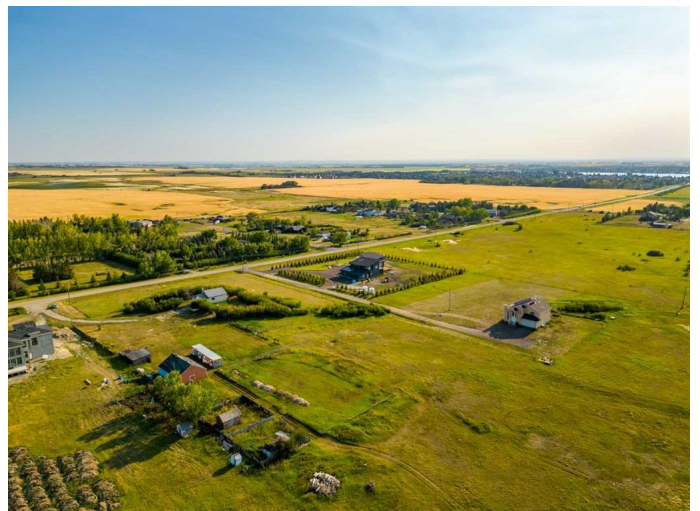
East Chestermere is experiencing significant growth, making it an excellent opportunity for investors and developers. Located just a few kilometers from Chestermere Lake, this 15.5-acre parcel offers significant potential for subdivision into one-acre lots or high-density residential development. As the fastest-growing community in Alberta, Chestermere is a highly desirable location, just 20 minutes from Calgary. The flat land provides a strong foundation for building a new community. With the City's Municipal Development Plan currently being updated, now is the perfect time to invest. Primarily land value, but there is a house in disrepair, water well and septic all sold as is. See supplements for the UMP plan.

## Essential Information

MLS® #	A2193950
Price	\$1,799,999
Bathrooms	0.00
Acres	15.50
Type	Land
Sub-Type	Residential Land
Status	Active

## Community Information

Address	280156 Township Road 241a
Subdivision	East Chestermere



City	Chestermere
County	Chestermere
Province	Alberta
Postal Code	T2P 2G7

### **Additional Information**

Date Listed	February 11th, 2025
Days on Market	195
Zoning	LLR

### **Listing Details**

Listing Office	Coldwell Banker Mountain Central
----------------	----------------------------------

Data is supplied by Pillar 9â„¢ MLS® System. Pillar 9â„¢ is the owner of the copyright in its MLS® System. Data is deemed reliable but is not guaranteed accurate by Pillar 9â„¢. The trademarks MLS®, Multiple Listing Service® and the associated logos are owned by The Canadian Real Estate Association (CREA) and identify the quality of services provided by real estate professionals who are members of CREA. Used under license.