

\$865,000 - 270106 Inverlake Road, Rural Rocky View County

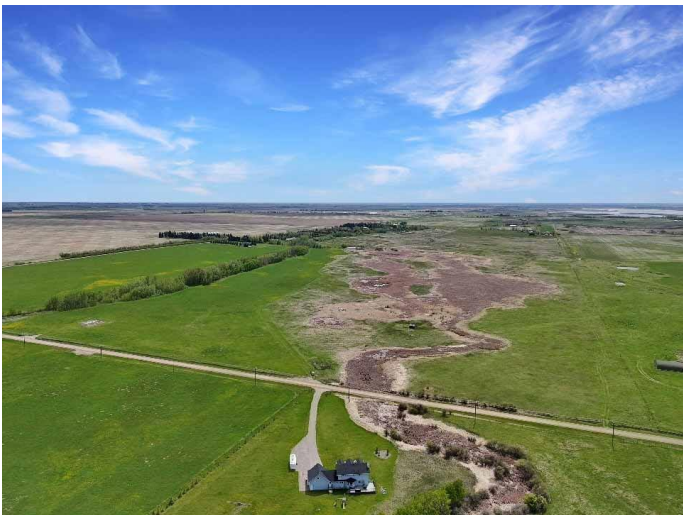
MLS® #A2197825

\$865,000

0 Bedroom, 0.00 Bathroom,
Land on 99.39 Acres

NONE, Rural Rocky View County, Alberta

Located in an up-and-coming area, just shy of the Industrial ASP in Wheatland County, this property is positioned to benefit from future growth. Only 5 minutes from the DaHavilland manufacturing site, which is set to boost the local economy and employment opportunities, this is a prime spot for investment. The property currently features two surface leases that generate yearly revenue, with additional seasonal farming leases available. Whether you're looking to invest in a property that offers immediate income or planning to build your dream home or business, this well-priced opportunity is ready for your vision. Don't miss out on this versatile parcel with great potential!



Essential Information

MLS® #	A2197825
Price	\$865,000
Bathrooms	0.00
Acres	99.39
Type	Land
Sub-Type	Residential Land
Status	Active

Community Information

Address	270106 Inverlake Road
Subdivision	NONE
City	Rural Rocky View County

County	Rocky View County
Province	Alberta
Postal Code	T1Z 0V6

Additional Information

Date Listed	February 27th, 2025
Days on Market	128
Zoning	A-Gen

Listing Details

Listing Office	Real Broker
----------------	-------------

Data is supplied by Pillar 9â„¢ MLS® System. Pillar 9â„¢ is the owner of the copyright in its MLS® System. Data is deemed reliable but is not guaranteed accurate by Pillar 9â„¢. The trademarks MLS®, Multiple Listing Service® and the associated logos are owned by The Canadian Real Estate Association (CREA) and identify the quality of services provided by real estate professionals who are members of CREA. Used under license.