

\$584,900 - 256 Shady Lane, Rural Athabasca County

MLS® #A2198387

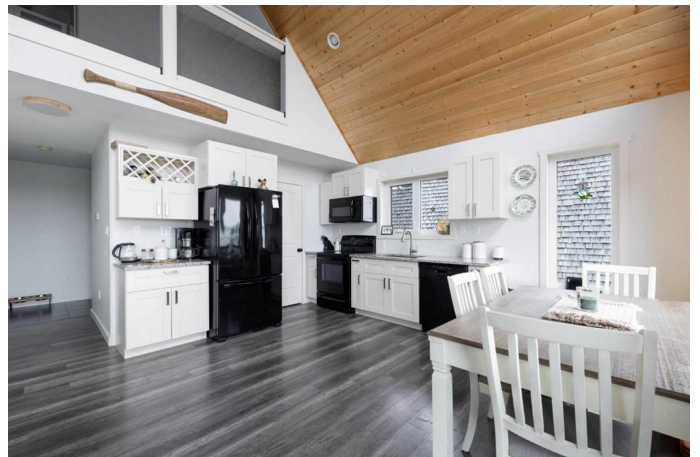
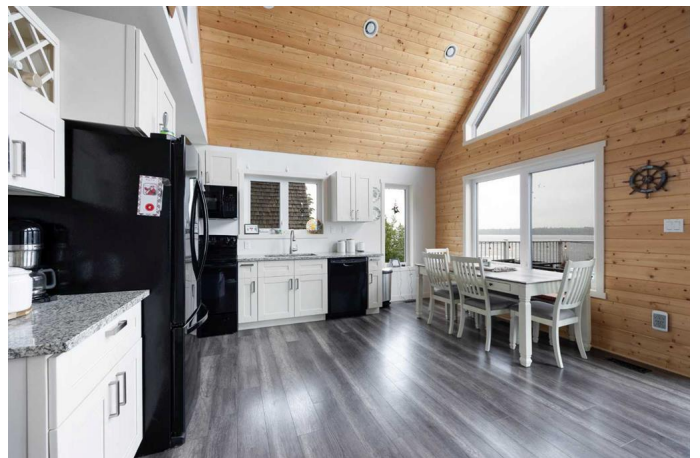
\$584,900

3 Bedroom, 3.00 Bathroom, 1,469 sqft

Residential on 0.20 Acres

Mewatha Beach, Rural Athabasca County, Alberta

SKELETON LAKE - LAKEFRONT! Escape to this beautiful year-round A-frame home and leave your worries behind. Whether you're looking for a permanent residence or a weekend retreat close to home, this property is the perfect fit. Nestled right on the lake, this 3-bedroom, 2.5-bathroom home is finished with quality and comfort in mind. As you enter, you're greeted by a spacious hallway with a walk-in closet and a conveniently located 2-piece bathroom. The open-concept kitchen and great room offer a warm and inviting space, complete with full appliances, a large pantry, and a cozy dining area. The living room features spectacular lake views and easy access to a huge deck, which is equipped with a gas hookup for a barbecue or fire pit—ideal for outdoor entertaining and soaking in the stunning sunsets. The main floor also includes a spacious primary bedroom with his and her closets with organizers and a beautiful 3-piece ensuite. Upstairs, the loft overlooks the kitchen and great room, and offers two additional bedrooms, a full 4-piece bathroom, and a quiet sitting area perfect for reading or relaxing. Massive windows across the front of the home provide incredible natural light and allow you to take in the peaceful views of the lake and surrounding nature from almost every room. The walk-out basement is partially developed and features some completed drywall work. It includes a family room with access to a large screened-in rear porch and



is framed for an additional bedroom, bathroom, laundry room, and includes a 1,200-gallon potable water tank in the mechanical room. There's also a 1,750-gallon concrete holding tank and space for a future 16x20 garage. Located in a highly sought-after area known for year-round recreation, you can enjoy quadding, snowmobiling, boating, fishing, and swimming right out your front door. The public boat launch, beach, and playground are just minutes away, along with a 9-hole golf course and other amenities. This home offers the full lake lifestyle package in an unbeatable location—only 10 minutes from Boyle, 1.5 hours from Edmonton, and 2.5 hours from Fort McMurray. Don't miss your chance to own this peaceful waterfront haven!

Built in 2015

Essential Information

MLS® #	A2198387
Price	\$584,900
Bedrooms	3
Bathrooms	3.00
Full Baths	2
Half Baths	1
Square Footage	1,469
Acres	0.20
Year Built	2015
Type	Residential
Sub-Type	Detached
Style	2 Storey
Status	Active

Community Information

Address	256 Shady Lane
Subdivision	Mewatha Beach
City	Rural Athabasca County

County	Athabasca County
Province	Alberta
Postal Code	T0A0M0

Amenities

Parking Spaces	3
Parking	Off Street
Is Waterfront	Yes
Waterfront	Beach Front, Lake, Lake Front, Lake Privileges, See Remarks, Waterfront

Interior

Interior Features	Beamed Ceilings, Ceiling Fan(s), High Ceilings, Vinyl Windows, No Smoking Home, Open Floorplan
Appliances	Dishwasher, Electric Stove, Refrigerator
Heating	Forced Air, Natural Gas
Cooling	None
Has Basement	Yes
Basement	Exterior Entry, Full, Partially Finished, Walk-Out

Exterior

Exterior Features	Balcony, Fire Pit
Lot Description	Beach, Close to Clubhouse, Lake, Sloped Down, Waterfront
Roof	Asphalt Shingle
Construction	Concrete, Vinyl Siding, Wood Frame
Foundation	Poured Concrete

Additional Information

Date Listed	March 3rd, 2025
Days on Market	176
Zoning	RESIDENTIAL

Listing Details

Listing Office	RE/MAX Connect
----------------	----------------

Data is supplied by Pillar 9â„¢ MLS® System. Pillar 9â„¢ is the owner of the copyright in its MLS® System. Data is deemed reliable but is not guaranteed accurate by Pillar 9â„¢. The trademarks MLS®, Multiple Listing Service® and the associated logos are owned by The Canadian Real Estate Association (CREA) and identify the quality of services provided by real estate professionals who are members of CREA. Used under license.