

# \$839,900 - 173 Edith Place Nw, Calgary

MLS® #A2202687

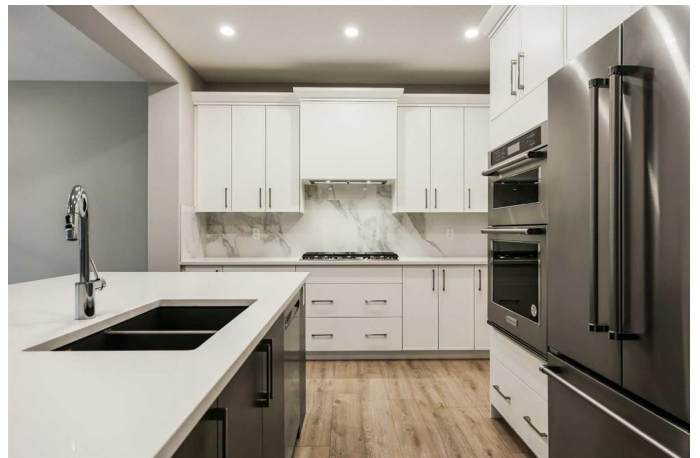
**\$839,900**

4 Bedroom, 3.00 Bathroom, 2,451 sqft

Residential on 0.08 Acres

Glacier Ridge, Calgary, Alberta

**\*\*BRAND NEW HOME ALERT\*\*** Great news for eligible First-Time Home Buyers â€” NO GST payable on this home! The Government of Canada is offering GST relief to help you get into your first home. Save \$\$\$\$\$ in tax savings on your new home purchase. Eligibility restrictions apply. For more details, visit a Jayman show home or discuss with your friendly REALTORÂ®. Exquisite & beautiful, you will immediately be impressed by Jayman BUILT's "HOLLY" HOME located in the brand new community of Glacier Ridge. A soon to be lovely neighborhood with great amenities welcomes you into 2400++sqft of craftsmanship & design offering a unique and expanded open floor plan boasting a stunning GOURMET kitchen featuring a beautiful Flush Centre Island, QUARTZ COUNTERS, pantry & Sleek Stainless Steel KITCHENAID Appliances that overlooks the Dining Area that flows nicely into the spacious Great Room complimented by a gorgeous feature fireplace. Lovely laminate graces the Main floor along with stunning flooring in all Baths & laundry. Discover a FOURTH BEDROOM with a full en suite situated on the main floor - ideal for additional family members, guests or anyone who prefers no stairs. The 2nd level boasts 3 more bedrooms, convenient laundry & the most amazing Master Bedroom offering a PRIVATE EN SUITE with a spacious shower, over sized soaker tub, double vanities & Walk-through Closet. Additional features of the amazing home include a professionally



designed Alabaster Colour Palette, convenient side entry, iron spindle added to stairs, 11x10 rear deck with BBQ gas line, raised 9ft basement ceiling height and 3-piece rough-in plumbing. Enjoy the lifestyle you & your family deserve in a wonderful Community you will enjoy for a lifetime! Jayman's standard inclusions feature their Core Performance with 10 Solar Panels, BuiltGreen Canada standard, with an EnerGuide Rating, UV-C Ultraviolet Light Purification System, High Efficiency Furnace with Merv 13 Filters & HRV unit, Navien Tankless Hot Water Heater, Triple Pane Windows and Smart Home Technology Solutions! Welcome Home!

Built in 2024

**Essential Information**

MLS® #	A2202687
Price	\$839,900
Bedrooms	4
Bathrooms	3.00
Full Baths	3
Square Footage	2,451
Acres	0.08
Year Built	2024
Type	Residential
Sub-Type	Detached
Style	2 Storey
Status	Active

**Community Information**

Address	173 Edith Place Nw
Subdivision	Glacier Ridge
City	Calgary
County	Calgary
Province	Alberta
Postal Code	T3R 2E2

**Amenities**

Amenities	None
Parking Spaces	4
Parking	Concrete Driveway, Double Garage Attached, Enclosed, Garage Door Opener, Garage Faces Front
# of Garages	2

## Interior

Interior Features	No Animal Home, No Smoking Home, Open Floorplan, Pantry, Double Vanity, High Ceilings, Kitchen Island, Low Flow Plumbing Fixtures, Quartz Counters, Smart Home, Tankless Hot Water, Walk-In Closet(s)
Appliances	Dishwasher, Microwave, Refrigerator, Oven-Built-In, Built-In Oven, Garage Control(s), Gas Cooktop, Range Hood
Heating	Forced Air, Natural Gas
Cooling	None
Fireplace	Yes
# of Fireplaces	1
Fireplaces	Electric, Great Room
Has Basement	Yes
Basement	Full, Unfinished

## Exterior

Exterior Features	None
Lot Description	Irregular Lot
Roof	Asphalt Shingle
Construction	Stone, Vinyl Siding, Wood Frame
Foundation	Poured Concrete

## Additional Information

Date Listed	March 14th, 2025
Days on Market	142
Zoning	R-G
HOA Fees	420
HOA Fees Freq.	ANN

## Listing Details

Listing Office	Jayman Realty Inc.
----------------	--------------------

Data is supplied by Pillar 9â„¢ MLS® System. Pillar 9â„¢ is the owner of the copyright in its MLS® System. Data is deemed reliable but is not guaranteed accurate by Pillar 9â„¢. The trademarks MLS®, Multiple Listing Service® and the associated logos are owned by The Canadian Real Estate Association (CREA) and identify the quality of services provided by real estate professionals who are members of CREA. Used under license.