

\$1,835,000 - 329 Silverado Ranch Manor Sw, Calgary

MLS® #A2208619

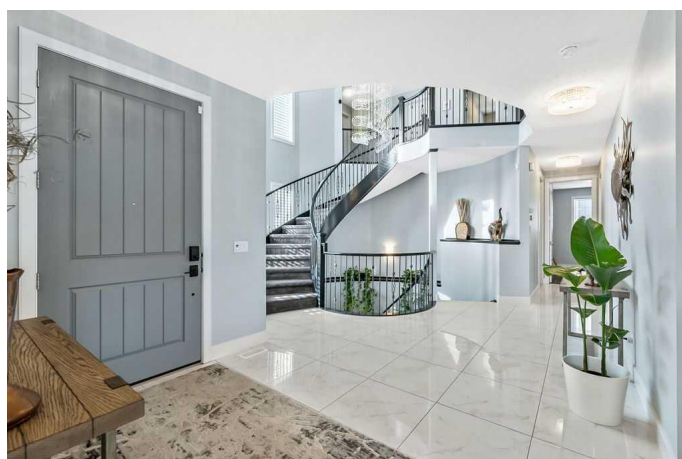
\$1,835,000

5 Bedroom, 4.00 Bathroom, 3,962 sqft

Residential on 0.33 Acres

Silverado, Calgary, Alberta

Exquisite Estate Home on a Huge Corner Lot – Perfect for Families! Discover this stunning estate home, perfectly positioned in a picturesque community surrounded by miles of scenic walking paths with easy access to Stoney Trail. Boasting amazing curb appeal, this residence sits on a sprawling corner lot and features a massive triple car garage. Step inside to a grand entrance, where a feature circular staircase and stunning chandelier set the tone for the elegance within. The open concept living space is bathed in natural light from huge windows, while a feature fireplace and sliding barn door add warmth and character. The heart of the home is the chef’s kitchen, featuring a massive island, two built-in wall ovens, two dishwashers, a gas stove top, and a state-of-the-art refrigerator. The adjacent dining area is designed for entertaining, complete with a built-in credenza, beverage fridge, and wine rack. Upstairs, the primary retreat is nothing short of luxurious, with a vaulted ceiling, dreamy walk-in closet, and an ensuite that rivals a spa—featuring a large shower and deep soaker tub. Three additional spacious bedrooms share a 5-piece bathroom with double sinks, making mornings a breeze for the whole family. A bonus room, conveniently tucked away in the south wing, provides a perfect spot for relaxation, while the upstairs laundry adds extra convenience. The recently developed basement offers even more living space, including a 5th bedroom, games room, family room, and a gorgeous 4th



bathroom. A highlight is the wine room, featuring creative touches like a whiskey barrel wall and a wine fridge, a true entertainer's dream! Recent upgrades include permanent exterior lighting, shingles, two furnaces, and a hot water tank. The backyard has been revitalized with a putting green, new patio cover, deck rails with glass panels, and fresh landscaping with trees and plants. A 12x12 composite deck provides additional entertaining space or the perfect base for a greenhouse. This extraordinary home is move-in ready and waiting for your family!

Built in 2014

Essential Information

MLS® #	A2208619
Price	\$1,835,000
Bedrooms	5
Bathrooms	4.00
Full Baths	3
Half Baths	1
Square Footage	3,962
Acres	0.33
Year Built	2014
Type	Residential
Sub-Type	Detached
Style	2 Storey
Status	Active

Community Information

Address	329 Silverado Ranch Manor Sw
Subdivision	Silverado
City	Calgary
County	Calgary
Province	Alberta
Postal Code	T2X 0V2

Amenities

Amenities	None
Parking Spaces	6
Parking	Triple Garage Attached
# of Garages	3

Interior

Interior Features	Bar, Breakfast Bar, Built-in Features, Chandelier, Closet Organizers, Double Vanity, Granite Counters, Kitchen Island, No Smoking Home, Open Floorplan, Soaking Tub, Storage
Appliances	Bar Fridge, Dryer, Gas Cooktop, Microwave, Range Hood, Refrigerator, Washer, Wine Refrigerator
Heating	Forced Air, Natural Gas
Cooling	Central Air
Fireplace	Yes
# of Fireplaces	1
Fireplaces	Electric, Living Room, Mantle
Has Basement	Yes
Basement	Finished, Full

Exterior

Exterior Features	BBQ gas line, Dog Run
Lot Description	Back Yard, Backs on to Park/Green Space, Corner Lot, Cul-De-Sac, Dog Run Fenced In, Front Yard, Greenbelt, Landscaped, Lawn
Roof	Asphalt Shingle
Construction	Stone, Stucco, Wood Frame
Foundation	Poured Concrete

Additional Information

Date Listed	April 4th, 2025
Days on Market	26
Zoning	DC
HOA Fees	210
HOA Fees Freq.	ANN

Listing Details

Listing Office	RE/MAX Realty Professionals
----------------	-----------------------------

Data is supplied by Pillar 9â„¢ MLS® System. Pillar 9â„¢ is the owner of the copyright in its MLS® System. Data is deemed reliable but is not guaranteed accurate by Pillar 9â„¢. The trademarks MLS®, Multiple Listing Service® and the associated logos are owned by The Canadian Real Estate Association (CREA) and identify the quality of services provided by real estate professionals who are members of CREA. Used under license.