

\$614,900 - 5 Laurel Close, Sylvan Lake

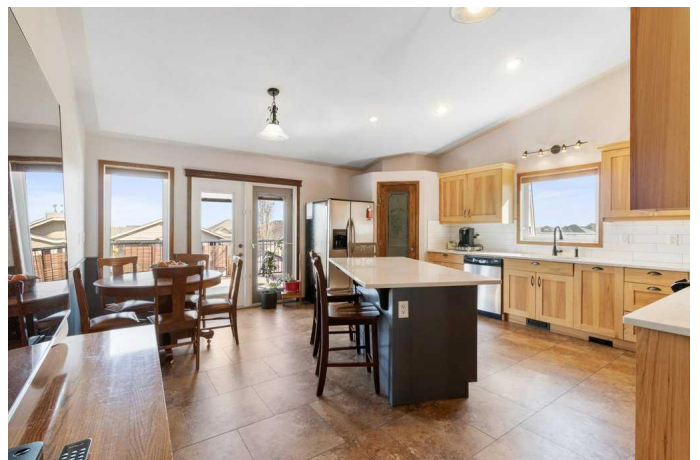
MLS® #A2212632

\$614,900

5 Bedroom, 3.00 Bathroom, 1,480 sqft
Residential on 0.14 Acres

Lakeway Landing, Sylvan Lake, Alberta

BEAUTIFUL 1480sqft WALKOUT BUNGALOW! SUPER CLEAN, 5 BEDROOM/3 BATHROOM HOME WITH OVERSIZED GARAGE, EXTRA LARGE CONCRETE PARKING PAD, IN A QUIET CLOSE This home has pride of ownership. The spacious tiled entry way is very appealing, revealing the vaulted ceiling design with tons of natural light and 2 skylights, gas fireplace, and rich hardwood flooring. The kitchen features tons of custom hickory cabinets with soft close doors, quartz countertops, eating bar in the island, tiled backsplash, all stainless steel appliances, and corner pantry....overlooking the large dining area. The large master bedroom has a full ensuite bathroom with shower, his and her's sinks, and walk in closet. Two more bedrooms, full 4 piece bathroom, and main floor laundry complete the main level, making it perfect for the growing family. Head downstairs and enjoy the in-floor heated basement featuring the large family room with wet bar, theatre room with raised seating, full bathroom, 2 more large bedrooms, and oversized utility and storage room. The oversized, fully finished, attached garage is perfect for all your vehicles and toys. Head out back through the walkout basement and enjoy the large deck and landscaped yard with parking for your trailer, boat or RV. Additional parking in front with the huge concrete pad. Air conditioned throughout, new engineered shingles (2024), hot water heater (2023) and new furnace. Close to schools,



parks, trail system, and both highways.
Perfect location that is close to schools, trails,
Sylvan Lake Gulls Stadium, excellent access
to both highways, dog park, and the list goes
on.

Built in 2007

Essential Information

MLS® #	A2212632
Price	\$614,900
Bedrooms	5
Bathrooms	3.00
Full Baths	3
Square Footage	1,480
Acres	0.14
Year Built	2007
Type	Residential
Sub-Type	Detached
Style	Bungalow
Status	Active

Community Information

Address	5 Laurel Close
Subdivision	Lakeway Landing
City	Sylvan Lake
County	Red Deer County
Province	Alberta
Postal Code	T4S 0B3

Amenities

Parking Spaces	5
Parking	Concrete Driveway, Double Garage Attached, Garage Door Opener, Garage Faces Front, Heated Garage, Insulated, RV Access/Parking
# of Garages	2

Interior

Interior Features	Bar, Ceiling Fan(s), Kitchen Island, No Smoking Home, Pantry, Quartz Counters, Recessed Lighting, Skylight(s), Vaulted Ceiling(s), Vinyl
-------------------	--

	Windows, Walk-In Closet(s)
Appliances	Dishwasher, Dryer, Garage Control(s), Gas Stove, Microwave Hood Fan, Washer/Dryer, Window Coverings
Heating	In Floor, Forced Air, Natural Gas
Cooling	Central Air
Fireplace	Yes
# of Fireplaces	1
Fireplaces	Gas, Living Room, Stone
Has Basement	Yes
Basement	Exterior Entry, Finished, Full, Walk-Out

Exterior

Exterior Features	Balcony
Lot Description	Back Lane, Cul-De-Sac, Landscaped
Roof	Asphalt Shingle
Construction	Stone, Vinyl Siding, Wood Frame
Foundation	Poured Concrete

Additional Information

Date Listed	April 16th, 2025
Days on Market	16
Zoning	R1

Listing Details

Listing Office	Royal LePage Network Realty Corp.
----------------	-----------------------------------

Data is supplied by Pillar 9â„¢ MLS® System. Pillar 9â„¢ is the owner of the copyright in its MLS® System. Data is deemed reliable but is not guaranteed accurate by Pillar 9â„¢. The trademarks MLS®, Multiple Listing Service® and the associated logos are owned by The Canadian Real Estate Association (CREA) and identify the quality of services provided by real estate professionals who are members of CREA. Used under license.