

\$14,188,400 - 158 Acres Glenmore Trail Se, Rural Rocky View County

MLS® #A2214640

\$14,188,400

0 Bedroom, 0.00 Bathroom,
Land on 158.02 Acres

NONE, Rural Rocky View County, Alberta

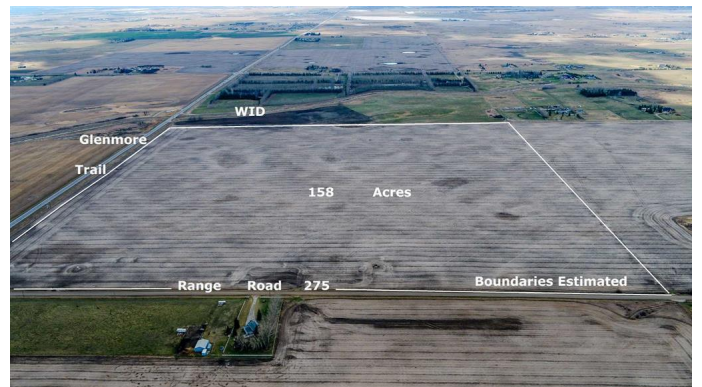
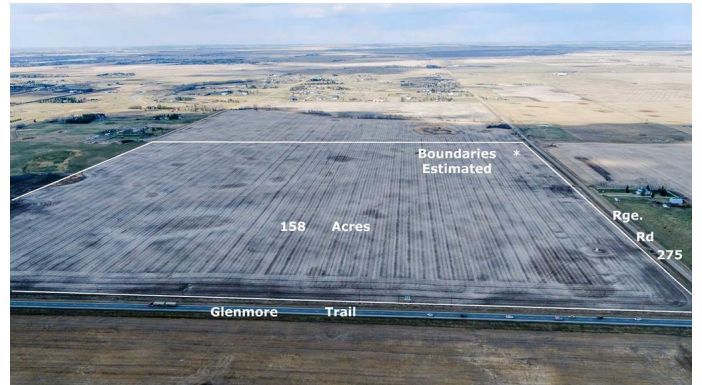
158 acres fronting onto Glenmore Trail east of Calgary City limits and located in the Calgary Chestermere Langdon Corridor. Great location to build Estate home for multiple or extended family. Lots of development planned and underway in surrounding southeast Calgary, Langdon and Chestermere; A great opportunity to plan for your future. Fronting onto Glenmore Trail (Highway 560) and Range Road 275 runs along east boundary. Check it out today!

Essential Information

| | |
|-----------|-----------------|
| MLS® # | A2214640 |
| Price | \$14,188,400 |
| Bathrooms | 0.00 |
| Acres | 158.02 |
| Type | Land |
| Sub-Type | Commercial Land |
| Status | Active |

Community Information

| | |
|-------------|-----------------------------|
| Address | 158 Acres Glenmore Trail Se |
| Subdivision | NONE |
| City | Rural Rocky View County |
| County | Rocky View County |
| Province | Alberta |
| Postal Code | T0J 1X2 |



Additional Information

| | |
|----------------|---------------|
| Date Listed | May 4th, 2025 |
| Days on Market | 88 |
| Zoning | A-GEN |

Listing Details

| | |
|----------------|-----------------------------|
| Listing Office | Legacy Real Estate Services |
|----------------|-----------------------------|

Data is supplied by Pillar 9â„¢ MLS® System. Pillar 9â„¢ is the owner of the copyright in its MLS® System. Data is deemed reliable but is not guaranteed accurate by Pillar 9â„¢. The trademarks MLS®, Multiple Listing Service® and the associated logos are owned by The Canadian Real Estate Association (CREA) and identify the quality of services provided by real estate professionals who are members of CREA. Used under license.