

\$449,000 - 408, 3316 Rideau Place Sw, Calgary

MLS® #A2216788

\$449,000

2 Bedroom, 1.00 Bathroom, 953 sqft

Residential on 0.00 Acres

Rideau Park, Calgary, Alberta

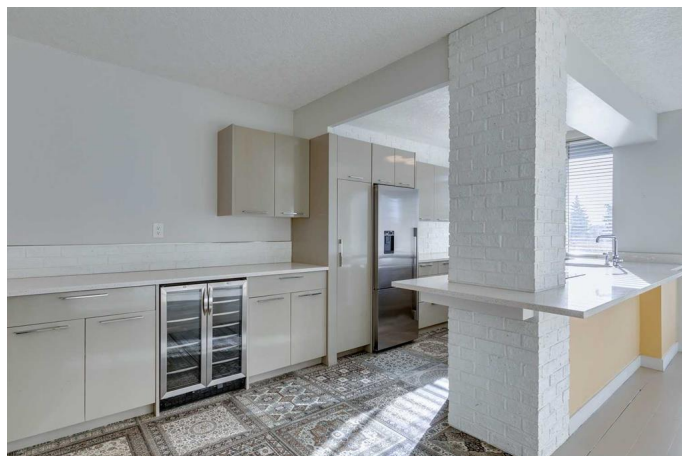
Your new home is here! This spacious two bedroom condo features a perfect layout for comfort with style. The south facing windows and balcony look out to a beautiful panoramic view and welcome sunshine throughout the condo. Features insuite laundry, and includes an assigned indoor secured parking stall and storage locker. There is also a private outdoor pool option available in season for condo owners. Just down the hill youâ€™ll find the Elbow River and Calgary pathway system, plus all the great shops and restaurants on 4th Street in Mission. Be sure to check out the interactive 3D virtual tour.

Built in 1955

Essential Information

MLS® #	A2216788
Price	\$449,000
Bedrooms	2
Bathrooms	1.00
Full Baths	1
Square Footage	953
Acres	0.00
Year Built	1955
Type	Residential
Sub-Type	Apartment
Style	Single Level Unit
Status	Active

Community Information



Address	408, 3316 Rideau Place Sw
Subdivision	Rideau Park
City	Calgary
County	Calgary
Province	Alberta
Postal Code	T2S 1Z4

Amenities

Amenities	Coin Laundry, Elevator(s), Outdoor Pool, Recreation Room, Visitor Parking, Garbage Chute
Parking Spaces	1
Parking	Assigned, Stall, Underground
Has Pool	Yes

Interior

Interior Features	See Remarks
Appliances	Bar Fridge, Dishwasher, Electric Range, European Washer/Dryer Combination, Garage Control(s), Refrigerator, Window Coverings
Heating	Hot Water
Cooling	None
# of Stories	6

Exterior

Exterior Features	Other
Construction	Brick, Concrete, Wood Siding

Additional Information

Date Listed	May 1st, 2025
Days on Market	1
Zoning	M-H2

Listing Details

Listing Office	Real Estate Professionals Inc.
----------------	--------------------------------

Data is supplied by Pillar 9â„¢ MLS® System. Pillar 9â„¢ is the owner of the copyright in its MLS® System. Data is deemed reliable but is not guaranteed accurate by Pillar 9â„¢. The trademarks MLS®, Multiple Listing Service® and the associated logos are owned by The Canadian Real Estate Association (CREA) and identify the quality of services provided by real estate professionals who are members of CREA. Used under license.