

\$315,000 - 2502, 111 Wolf Creek Drive Se, Calgary

MLS® #A2216937

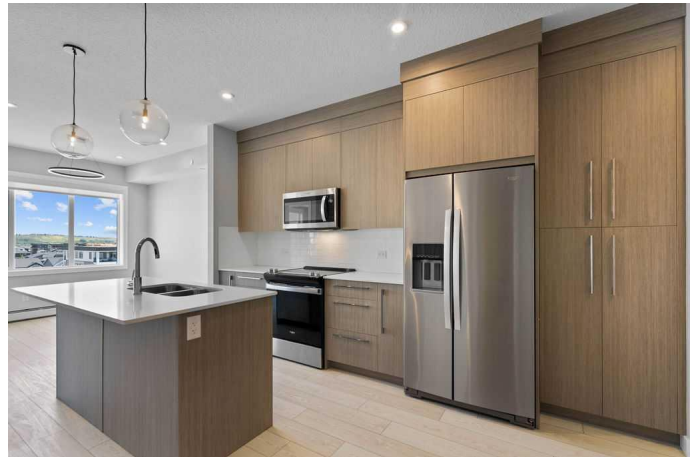
\$315,000

2 Bedroom, 1.00 Bathroom, 620 sqft

Residential on 0.00 Acres

Wolf Willow, Calgary, Alberta

TOP FLOOR EAST FACING UNIT | HEATED UNDERGROUND PARKING | STORAGE LOCKER | LAMINATE FLOORS + TILE ALL THROUGHOUT | 620 SQ FT OF LIVING SPACE (2 BED/1 BATH) | All in â€œWOLF WILLOWâ€• - a vibrant new community situated beside the scenic Bow River, seamlessly blending nature with modern living! Enjoy quick access to schools, shopping, and major roadways, making it ideal for families and professionals alike. Whether you're strolling along the river, enjoying the playgrounds, or exploring the trails, Wolf Willow is a place to call home for those who love nature and convenience in equal measure. Stepping through the front door, this modern home boasts an open-concept design with large windows that flood the space with natural light, and high-end finishes all throughout. The well appointed kitchen features top end stainless steel appliances, quartz countertops, and loads of full-height cabinetry with soft-close doors, drawers and even a pantry! As you move into the open concept living space, the windows reveal views of the courtyard with a large east facing balcony just to the side. The living/dining spaces are generously sized making it perfect to entertain family and friends! At the back of the home, the primary suite has a large walk-in closet and well designed 4-piece bathroom. At the front of the home youâ€™™ll find the large second bedroom which is located next to the in-suite laundry, and front entrance. Harlow



has fantastic building amenities including a fitness center, pet spa, owner’s lounge, and a party room! With shops steps away, a premier gold club across the road, the bow river down the street and endless amenities within blocks, Harlow is the ultimate blend of nature and modern living! Don’t miss the opportunity to own this exceptional home!

Built in 2024

Essential Information

MLS® #	A2216937
Price	\$315,000
Bedrooms	2
Bathrooms	1.00
Full Baths	1
Square Footage	620
Acres	0.00
Year Built	2024
Type	Residential
Sub-Type	Apartment
Style	Single Level Unit
Status	Active

Community Information

Address	2502, 111 Wolf Creek Drive Se
Subdivision	Wolf Willow
City	Calgary
County	Calgary
Province	Alberta
Postal Code	T2X 5X2

Amenities

Amenities	Elevator(s), Fitness Center, Parking, Visitor Parking, Bicycle Storage, Party Room
Parking Spaces	1
Parking	Stall, Underground, Titled

Interior

Interior Features	Closet Organizers, Elevator, High Ceilings, Kitchen Island, No Animal Home, No Smoking Home, Open Floorplan, Walk-In Closet(s)
Appliances	Dishwasher, Electric Stove, Microwave Hood Fan, Refrigerator, Washer/Dryer, Window Coverings
Heating	Baseboard
Cooling	None
# of Stories	5

Exterior

Exterior Features	Balcony
Construction	Concrete, Wood Frame

Additional Information

Date Listed	July 3rd, 2025
Days on Market	68
Zoning	M-2

Listing Details

Listing Office	RE/MAX House of Real Estate
----------------	-----------------------------

Data is supplied by Pillar 9â„¢ MLS® System. Pillar 9â„¢ is the owner of the copyright in its MLS® System. Data is deemed reliable but is not guaranteed accurate by Pillar 9â„¢. The trademarks MLS®, Multiple Listing Service® and the associated logos are owned by The Canadian Real Estate Association (CREA) and identify the quality of services provided by real estate professionals who are members of CREA. Used under license.