

# \$785,000 - 733003 Range Road 95, Rural Grande Prairie No. 1, County of

---

MLS® #A2217228

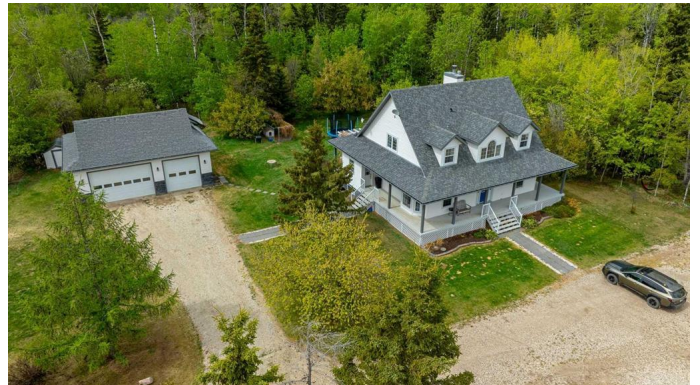
**\$785,000**

4 Bedroom, 4.00 Bathroom, 2,120 sqft  
Residential on 9.98 Acres

N/A, Rural Grande Prairie No. 1, County of, Alberta

Your dream acreage property becomes reality! This 9.98 acre slice of serenity impresses in different ways- from the Pinterest perfect, fully-finished home to detached garage, pasture, & serene surroundings- the urge to move here will be impossible for you to resist! The grounds give ample spaces for kids to play, there's fantastic tree windbreaks & youâ€™ll enjoy the 4 km of recently mulched walking paths through the woods. Go for a jog, take quad for a rip, or cross-country ski, on the extensive trails.

There is a large, fenced pasture area with a blend of grass, trees, pond, garden plot & automatic stock waterer fed by underground lines. Detached, radiant heated, 30â€™ x 36â€™ triple garage has own very nice 2-piece bathroom & super handy boot or pet wash station as well as utility sink. From there, you can enter home's side door to updated mudroom/laundry area with closet, cabinets & charming patterned tile backsplash. Other option, go thru statement blue front door & into huge front foyer with wonderful sitting room just off of it. Excellent home-based business office space, with ability to close off room's 2 doors to add extra privacy. Walking straight in, you pass the charming powder room & into the epic, great room with amazing windows & vaulted ceilings. Truly stunning! Think unrestricted Christmas tree



heights & cozy evenings around the wood burning fireplace. The whole home has a tremendous abundance of natural light giving such a warm & inviting ambience. Off the great room is the primary bedroom with lovely spa-like ensuite with infloor heat, corner jetted tub, separate shower, make-up station & walk in closet. Recently renovated kitchen & dining area boasts ample cabinets, new sink, backsplash & quartz countertops, breakfast bar & reverse osmosis. All new light fixtures on main level & upstairs & whole house was painted. Upstairs has 2 massive bedrooms with double closets, cute dormer style windows, & full bathroom between the two, with hallway overlooking the great room. Downstairs has infloor heat, family room, bedroom with adjoining flex space/reading den & full gorgeous bathroom. Wonderful for long-term guests, nanny or teenager who needs a bit more space to call their own. Enjoy movie night at home in the theatre room with extra insulation limiting sound transfer. Mammoth utility room houses the essentials plus has lots of storage space. Outside, the fabulous wrap-around deck has back pergola & built in bench-style seating for many guests. Top it all off with peaceful views to the east of farm fields. Welcome home!

Built in 2003

### **Essential Information**

MLS® #	A2217228
Price	\$785,000
Bedrooms	4
Bathrooms	4.00
Full Baths	3
Half Baths	1
Square Footage	2,120
Acres	9.98
Year Built	2003

Type	Residential
Sub-Type	Detached
Style	Acreage with Residence, 1 and Half Storey
Status	Active

### Community Information

Address	733003 Range Road 95
Subdivision	N/A
City	Rural Grande Prairie No. 1, County of
County	Grande Prairie No. 1, County of
Province	Alberta
Postal Code	T0H 0C0

### Amenities

Utilities	Electricity Connected, Natural Gas Connected, See Remarks, Sewer Connected, Water Connected
Parking Spaces	10
Parking	Driveway, Heated Garage, Additional Parking, Garage Faces Front, Gravel Driveway, Outside, Oversized, See Remarks, Triple Garage Detached
# of Garages	3

### Interior

Interior Features	Built-in Features, High Ceilings, Jetted Tub, Quartz Counters, See Remarks, Breakfast Bar, Recessed Lighting
Appliances	Dishwasher, Dryer, Electric Stove, Refrigerator, Washer, See Remarks
Heating	Forced Air, Natural Gas
Cooling	Central Air
Fireplace	Yes
# of Fireplaces	1
Fireplaces	Great Room, Wood Burning
Has Basement	Yes
Basement	Full, Finished

### Exterior

Exterior Features	Garden, Private Yard, Other
Lot Description	Landscaped, See Remarks, Lawn, Many Trees, Native Plants, Pasture, Private, Views
Roof	Asphalt Shingle
Construction	Wood Frame

Foundation                      Poured Concrete

**Additional Information**

Date Listed                      May 20th, 2025  
Days on Market                94  
Zoning                              CR-5

**Listing Details**

Listing Office                    Royal LePage - The Realty Group

Data is supplied by Pillar 9â„¢ MLS® System. Pillar 9â„¢ is the owner of the copyright in its MLS® System. Data is deemed reliable but is not guaranteed accurate by Pillar 9â„¢. The trademarks MLS®, Multiple Listing Service® and the associated logos are owned by The Canadian Real Estate Association (CREA) and identify the quality of services provided by real estate professionals who are members of CREA. Used under license.