

\$178,500 - 8, 1601 23 Street N, Lethbridge

MLS® #A2218003

\$178,500

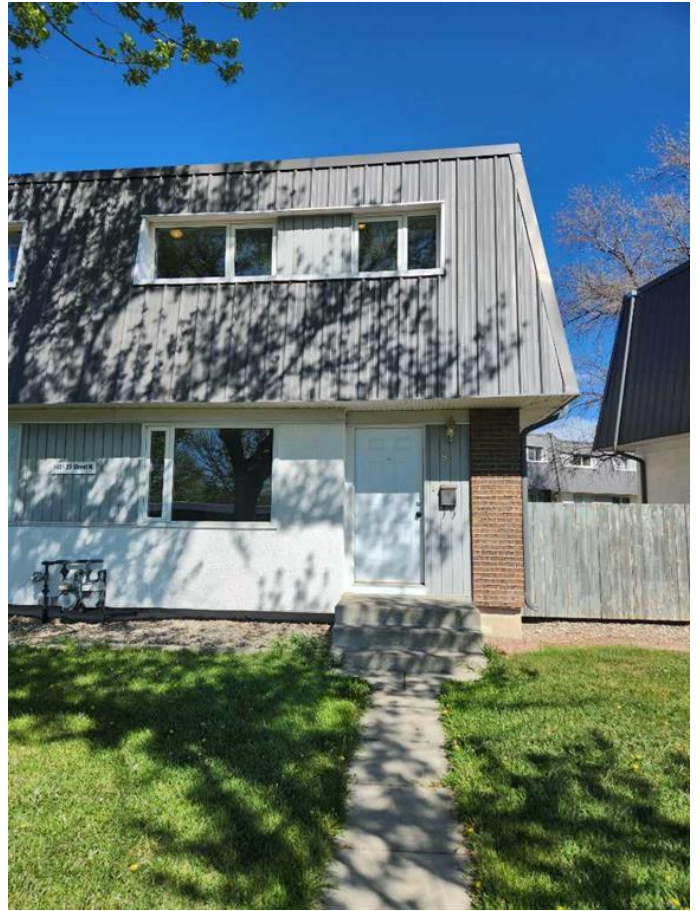
3 Bedroom, 1.00 Bathroom, 983 sqft

Residential on 0.00 Acres

Park Meadows, Lethbridge, Alberta

Affordable end unit condo with kitchen and laundry appliances included. Ready for immediate occupancy! 3 bedrooms upstairs, with 983 sq feet above grade. Plus there's storage space and a family room developed in the basement. You have a little personal use area fenced off patio space, overlooking the treed courtyard. Close to all amenities such as parks, schools, public transportation, restaurants and more, this condo offers plenty of convenience.

Built in 1974



Essential Information

MLS® #	A2218003
Price	\$178,500
Bedrooms	3
Bathrooms	1.00
Full Baths	1
Square Footage	983
Acres	0.00
Year Built	1974
Type	Residential
Sub-Type	Row/Townhouse
Style	2 Storey
Status	Active

Community Information

Address	8, 1601 23 Street N
Subdivision	Park Meadows

City	Lethbridge
County	Lethbridge
Province	Alberta
Postal Code	T1H 4M9

Amenities

Amenities	Parking
Parking Spaces	1
Parking	Off Street, Stall

Interior

Interior Features	Closet Organizers
Appliances	Dishwasher, Refrigerator, Stove
Heating	Forced Air
Cooling	None
Has Basement	Yes
Basement	Finished, Full

Exterior

Exterior Features	Other
Lot Description	Backs on to Park/Green Space
Roof	Flat
Construction	Brick, Metal Siding, Stucco, Vinyl
Foundation	Poured Concrete

Additional Information

Date Listed	May 12th, 2025
Days on Market	1
Zoning	R-50

Listing Details

Listing Office	Royal Lepage South Country - Lethbridge
----------------	---

Data is supplied by Pillar 9â„¢ MLSÂ® System. Pillar 9â„¢ is the owner of the copyright in its MLSÂ® System. Data is deemed reliable but is not guaranteed accurate by Pillar 9â„¢. The trademarks MLSÂ®, Multiple Listing ServiceÂ® and the associated logos are owned by The Canadian Real Estate Association (CREA) and identify the quality of services provided by real estate professionals who are members of CREA. Used under license.

