

\$475,000 - 1 Poplar Ridge Close, Didsbury

MLS® #A2219029

\$475,000

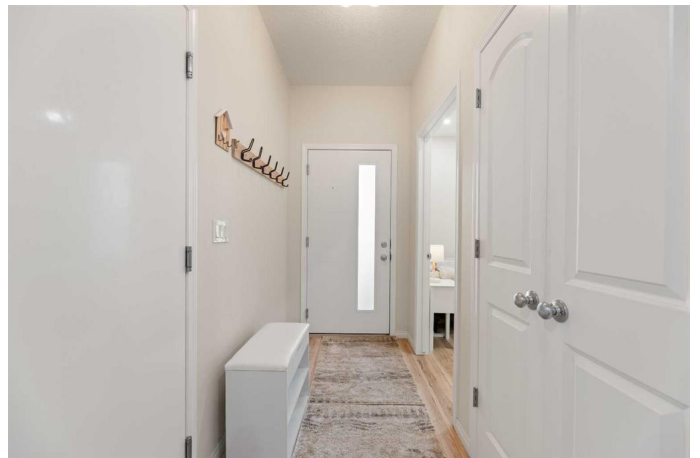
3 Bedroom, 2.00 Bathroom, 998 sqft

Residential on 0.07 Acres

NONE, Didsbury, Alberta

THIS COULD BE YOUR NEXT HOME!!

Almost brand new home in a great location in Didsbury! This home has several upgrades and was built by a reputable local builder. Step inside and you will immediately notice the open floor plan and how meticulously clean it is. The main floor has vinyl flooring and you will appreciate that the living room has a wood stove! The kitchen has quartz countertops, tiled backsplash, stainless steel appliances, large island with sink & eating bar, extra pantry cabinets, message centre and plenty of white cabinetry-this is really a great space for entertaining since the dining is right there too. The main level has a good sized primary bedroom with large walk in closet and there is another bedroom. You will be surprised that the main bathroom is quite large and has a walk in tub-this is also wheelchair accessible. The laundry is in the main bath and in a clever alcove behind the door. Head downstairs and you will notice the plush carpeting in the family room and there is another bedroom. There's also a 3 pc bathroom with large shower and a huge storage room that would be a perfect space to easily convert to a media room. The basement has in-floor heat and you will appreciate the ground level windows which bring good light in. This is an end unit that has extra space for parking if needed and the yard is low maintenance gravel with raised garden beds. There are 2 decks that are a great area for relaxing and entertaining. There is an attached single garage and if you need even



more parking for your visitors there is a parking lot right across the street which gives you more privacy since there isn't a home right across from you. It is a really quiet area and a great neighborhood to live in. This home would be great for anyone wanting to downsize (since all important amenities are on the main level), a growing family or anyone wishing to have a quality home that has many super nice features. Put this lovely home on your list to view with your favorite realtor-call today to book your appointment!

Built in 2022

Essential Information

MLS® #	A2219029
Price	\$475,000
Bedrooms	3
Bathrooms	2.00
Full Baths	2
Square Footage	998
Acres	0.07
Year Built	2022
Type	Residential
Sub-Type	Row/Townhouse
Style	Bungalow
Status	Active

Community Information

Address	1 Poplar Ridge Close
Subdivision	NONE
City	Didsbury
County	Mountain View County
Province	Alberta
Postal Code	T0M0W0

Amenities

Parking Spaces	2
Parking	Additional Parking, Parking Pad, RV Access/Parking, Single Garage

	Attached
# of Garages	1

Interior

Interior Features	Breakfast Bar, Ceiling Fan(s), Closet Organizers, Kitchen Island, No Animal Home, No Smoking Home, Open Floorplan, Pantry, Quartz Counters, Vinyl Windows, Walk-In Closet(s)
Appliances	Dishwasher, Gas Stove, Microwave Hood Fan, Refrigerator, Window Coverings
Heating	In Floor, Forced Air, Natural Gas
Cooling	None
Fireplace	Yes
# of Fireplaces	1
Fireplaces	Glass Doors, Living Room, Wood Burning Stove
Has Basement	Yes
Basement	Finished, Full

Exterior

Exterior Features	BBQ gas line
Lot Description	Back Yard, Low Maintenance Landscape
Roof	Asphalt Shingle
Construction	Wood Frame
Foundation	Poured Concrete

Additional Information

Date Listed	May 8th, 2025
Days on Market	3
Zoning	R-5

Listing Details

Listing Office	RE/MAX ACA Realty
----------------	-------------------

Data is supplied by Pillar 9â„¢ MLSÂ® System. Pillar 9â„¢ is the owner of the copyright in its MLSÂ® System. Data is deemed reliable but is not guaranteed accurate by Pillar 9â„¢. The trademarks MLSÂ®, Multiple Listing ServiceÂ® and the associated logos are owned by The Canadian Real Estate Association (CREA) and identify the quality of services provided by real estate professionals who are members of CREA. Used under license.