

\$479,900 - 2015 Crestwood Drive Se, Medicine Hat

MLS® #A2219141

\$479,900

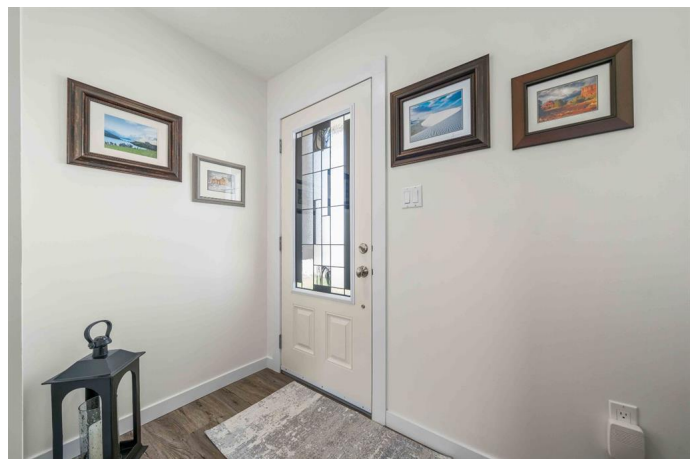
3 Bedroom, 2.00 Bathroom, 1,201 sqft

Residential on 0.15 Acres

Crestwood-Norwood, Medicine Hat, Alberta

PRIDE OF OWNERSHIP is evident the moment you walk in the door of 2015 Crestwood Drive SE. This beautifully maintained and thoughtfully updated home is nestled in a quiet, family-friendly neighbourhood in the heart of Medicine Hat, with incredible city views just outside your front door! This inviting property offers the perfect blend of comfort, style, and functionality—ideal for the retiree, the growing family, or anyone looking to settle in a mature, sought-after area. Step inside and be greeted by a bright, spacious main floor featuring large windows, a warm color palette, and an open-concept layout that flows effortlessly from the living room to the dining area and kitchen. The kitchen boasts modern appliances, ample cabinetry, and plenty of granite counter space, making it a pleasure to cook and entertain. While the upper floor offers 3 bedrooms, one of them has been tastefully converted into a handy laundry room.

Want to convert it back? No problem! There are still functioning laundry hookups available downstairs. The 3rd level offers a spacious family room with a multitude of options. This space offers a 3pc bathroom and a handy walkout to the backyard, as well as an electric fireplace, and a series of high quality rods and curtains that allow you to zone off more sleeping spaces for guests if required. The fully finished 4th level adds even more versatile living space, perfect for a family room, home office, or gym. It on this level that



you'll also find the spacious storage area and furnace room. The extensive list of upgrades to this home in recent years includes new windows, shingles, furnace, and on-demand hot water system. The detached 22x28 DRIVE-THRU garage is the perfect space for your projects or to simply keep your vehicles protected from the elements. The garage has been recently fully finished and insulated and includes some handy storage racks. The backyard is exactly what you hoped your next outdoor space would be, with a gorgeous patio, pergola, underground sprinklers, and an array of shrubs and perennials. Absolutely GORGEOUS! Located close to schools, parks, shopping, exhibition grounds, rinks, and all essential amenities, this home offers exceptional value and lifestyle. Move-in ready and full of character, 2015 Crestwood Drive SE is waiting to welcome you home.

Built in 1972

Essential Information

MLS® #	A2219141
Price	\$479,900
Bedrooms	3
Bathrooms	2.00
Full Baths	2
Square Footage	1,201
Acres	0.15
Year Built	1972
Type	Residential
Sub-Type	Detached
Style	4 Level Split
Status	Active

Community Information

Address	2015 Crestwood Drive Se
Subdivision	Crestwood-Norwood
City	Medicine Hat

County	Medicine Hat
Province	Alberta
Postal Code	T1A 7J9

Amenities

Parking Spaces	3
Parking	Double Garage Detached
# of Garages	2

Interior

Interior Features	Granite Counters, Tankless Hot Water, Vinyl Windows
Appliances	Central Air Conditioner, Dishwasher, Gas Stove, Microwave, Refrigerator, Washer/Dryer, Window Coverings
Heating	Forced Air
Cooling	Central Air
Fireplace	Yes
# of Fireplaces	1
Fireplaces	Electric
Has Basement	Yes
Basement	Finished, Full

Exterior

Exterior Features	Other
Lot Description	Back Lane, Back Yard, Landscaped, Rectangular Lot, Underground Sprinklers, Views
Roof	Asphalt Shingle
Construction	Wood Frame
Foundation	Poured Concrete

Additional Information

Date Listed	May 8th, 2025
Days on Market	2
Zoning	R-LD

Listing Details

Listing Office	ROYAL LEPAGE COMMUNITY REALTY
----------------	-------------------------------

Data is supplied by Pillar 9â„¢ MLS® System. Pillar 9â„¢ is the owner of the copyright in its MLS® System. Data is deemed reliable but is not guaranteed accurate by Pillar 9â„¢. The trademarks MLS®, Multiple Listing Service® and the associated logos are owned by The Canadian Real Estate Association (CREA) and identify the quality of services provided by real estate professionals who are members of CREA. Used under license.