

\$749,900 - 10741 150 Avenue, Rural Grande Prairie No. 1, County of

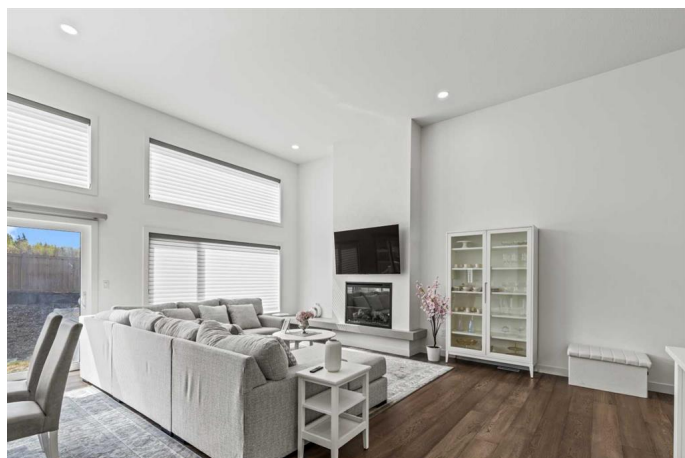
MLS® #A2219506

\$749,900

4 Bedroom, 3.00 Bathroom, 1,801 sqft
Residential on 0.15 Acres

Whispering Ridge, Rural Grande Prairie No. 1,
County of, Alberta

Welcome to this beautifully well maintained home in the highly desirable Whispering Ridge community. Immaculate and fully turn-key, this property is packed with features that blend luxury, comfort, and convenience. From the moment you arrive, you'll appreciate all it has to offer. The main floor boasts a bright, open-concept layout with tall ceilings and elegant hardwood flooring throughout. The kitchen is a chef's dream, featuring a gas cooktop, farmhouse sink, and a spacious butler's pantry. A modern fireplace feature adds warmth and style to the open living and dining area. Also on the main level are two well-sized bedrooms and a full bathroom, offering plenty of space for family or guests. Upstairs, the luxurious primary suite includes a walk-in closet and a stunning five-piece ensuite that looks straight out of a magazine. The added convenience of upstairs laundry makes daily living even easier. The fully finished basement continues the high-end feel of the home, offering a large open space, an additional bedroom, and a bathroom—perfect for a home gym, media room, or guest suite. In addition it offers a heated triple-car garage and the low-maintenance curb appeal, thanks to artificial turf in the front yard. The fully fenced and landscaped backyard is perfect for entertaining or relaxing, with a paved patio, fire pit area, and plenty of space to enjoy. Inside,



the home features central air conditioning and a hot water on demand system for year-round comfort. Located within walking distance to a K school, scenic walking and biking trails, and a community pond for winter skating, Whispering Ridge is the perfect place to raise a family. This exceptional home truly has it allstyle, comfort, and location. A must-see property in one of the area's most sought-after communities.

Built in 2020

Essential Information

MLS® #	A2219506
Price	\$749,900
Bedrooms	4
Bathrooms	3.00
Full Baths	3
Square Footage	1,801
Acres	0.15
Year Built	2020
Type	Residential
Sub-Type	Detached
Style	Bi-Level
Status	Active

Community Information

Address	10741 150 Avenue
Subdivision	Whispering Ridge
City	Rural Grande Prairie No. 1, County of
County	Grande Prairie No. 1, County of
Province	Alberta
Postal Code	T8X 0S3

Amenities

Parking Spaces	6
Parking	Concrete Driveway, Garage Door Opener, Heated Garage, Triple Garage Attached

of Garages 3

Interior

Interior Features Closet Organizers, Double Vanity, Granite Counters, High Ceilings, Kitchen Island, No Animal Home, No Smoking Home, Open Floorplan, Pantry, Recessed Lighting, Soaking Tub, Storage, Tankless Hot Water, Walk-In Closet(s)

Appliances Built-In Oven, Central Air Conditioner, Dishwasher, Double Oven, Garage Control(s), Gas Cooktop, Refrigerator, Tankless Water Heater, Washer/Dryer, Window Coverings

Heating Fireplace(s), Forced Air, Natural Gas

Cooling Central Air

Fireplace Yes

of Fireplaces 1

Fireplaces Gas, Living Room

Has Basement Yes

Basement Finished, Full

Exterior

Exterior Features Other, Private Yard

Lot Description Back Yard, Front Yard, Landscaped, Low Maintenance Landscape, Rectangular Lot, See Remarks

Roof Asphalt Shingle

Construction Vinyl Siding, Wood Frame

Foundation Poured Concrete

Additional Information

Date Listed May 8th, 2025

Days on Market 61

Zoning R2

Listing Details

Listing Office RE/MAX Grande Prairie

Data is supplied by Pillar 9â„¢ MLSÂ® System. Pillar 9â„¢ is the owner of the copyright in its MLSÂ® System. Data is deemed reliable but is not guaranteed accurate by Pillar 9â„¢. The trademarks MLSÂ®, Multiple Listing ServiceÂ® and the associated logos are owned by The Canadian Real Estate Association (CREA) and identify the quality of services provided by real estate professionals who are members of CREA. Used under license.