

\$289,900 - 2, 220 Swanson Crescent, Fort McMurray

MLS® #A2219607

\$289,900

4 Bedroom, 4.00 Bathroom, 1,924 sqft

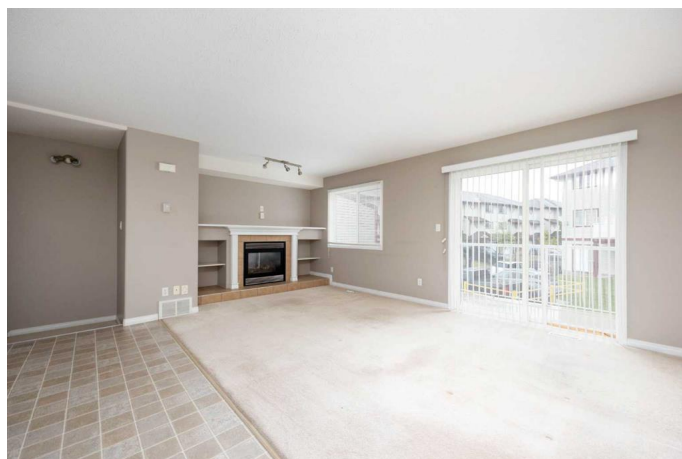
Residential on 0.04 Acres

Timberlea, Fort McMurray, Alberta

Welcome to #2 220 Swanson Crescent, a beautifully designed townhome in the heart of Fort McMurray. This charming residence offers 4 bedrooms, 3.5 bathrooms, and a single attached garage, providing the best of it all! Step into the ground level, where you will find a versatile large bedroom/den complete with a 4-piece ensuite. This space is perfect for guests or a home office. The direct access to the garage ensures easy and secure entry to your home. Ascend to the second level, where an open-concept layout creates a spacious and welcoming atmosphere. The large kitchen and dining area are ideal for family meals and entertaining, while the airy living room, featuring a gas fireplace, invites relaxation. Step out onto the rear deck for a breath of fresh air and outdoor enjoyment. The third level is dedicated to the private quarters, boasting three well-appointed bedrooms. The primary bedroom includes a 4-piece ensuite. An additional full bathroom serves the other two bedrooms, ensuring comfort and convenience for all family members. Situated close to the Syncrude Athletic Park and well-connected by public transportation, this home is ideally located for active families. Enjoy the benefits of nearby recreational facilities and easy access to all that Fort McMurray has to offer.

Built in 2005

Essential Information



| | |
|----------------|---------------|
| MLS® # | A2219607 |
| Price | \$289,900 |
| Bedrooms | 4 |
| Bathrooms | 4.00 |
| Full Baths | 3 |
| Half Baths | 1 |
| Square Footage | 1,924 |
| Acres | 0.04 |
| Year Built | 2005 |
| Type | Residential |
| Sub-Type | Row/Townhouse |
| Style | 3 Storey |
| Status | Active |

Community Information

| | |
|-------------|-------------------------|
| Address | 2, 220 Swanson Crescent |
| Subdivision | Timberlea |
| City | Fort McMurray |
| County | Wood Buffalo |
| Province | Alberta |
| Postal Code | T9K2W5 |

Amenities

| | |
|----------------|--|
| Amenities | None |
| Parking Spaces | 2 |
| Parking | Driveway, Garage Door Opener, Garage Faces Front, Single Garage Attached |
| # of Garages | 1 |

Interior

| | |
|-------------------|--|
| Interior Features | See Remarks |
| Appliances | Dishwasher, Microwave Hood Fan, Refrigerator, Stove(s), Washer/Dryer |
| Heating | Forced Air, Natural Gas |
| Cooling | None |
| Fireplace | Yes |
| # of Fireplaces | 1 |
| Fireplaces | Gas, Living Room, Mantle |
| Has Basement | Yes |
| Basement | Exterior Entry, Finished, None, Walk-Out |

Exterior

| | |
|-------------------|--------------------------|
| Exterior Features | Balcony |
| Lot Description | See Remarks |
| Roof | Asphalt Shingle |
| Construction | Vinyl Siding, Wood Frame |
| Foundation | Poured Concrete |

Additional Information

| | |
|----------------|---------------|
| Date Listed | May 9th, 2025 |
| Days on Market | 60 |
| Zoning | R2 |

Listing Details

| | |
|----------------|----------------|
| Listing Office | RE/MAX Connect |
|----------------|----------------|

Data is supplied by Pillar 9â„¸ MLS® System. Pillar 9â„¸ is the owner of the copyright in its MLS® System. Data is deemed reliable but is not guaranteed accurate by Pillar 9â„¸. The trademarks MLS®, Multiple Listing Service® and the associated logos are owned by The Canadian Real Estate Association (CREA) and identify the quality of services provided by real estate professionals who are members of CREA. Used under license.