

# **\$54,900 - 6 Timber Avenue, 5230 27 Highway, Rural Mountain View County**

---

MLS® #A2220206

**\$54,900**

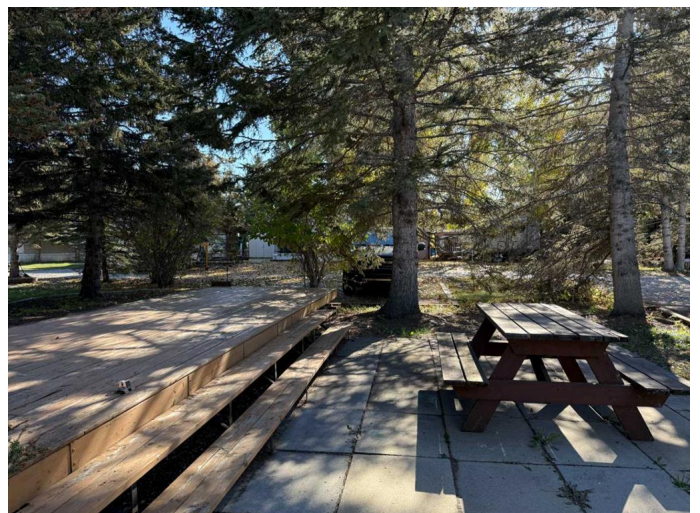
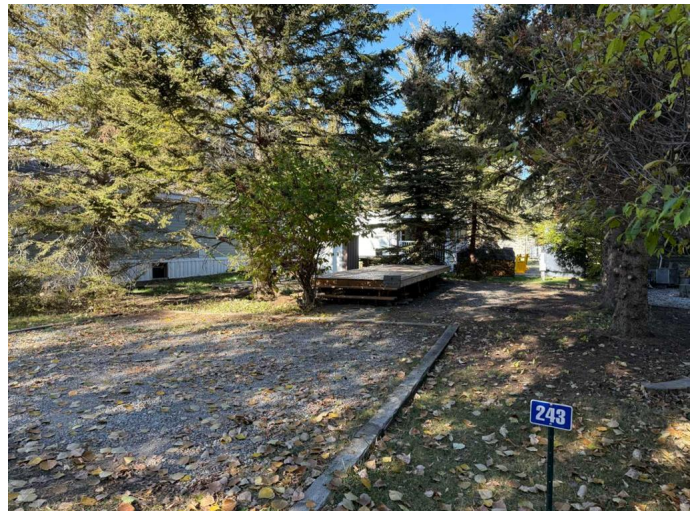
0 Bedroom, 0.00 Bathroom,  
Land on 0.06 Acres

Tall Timber, Rural Mountain View County,  
Alberta

Vacation close to home! Enjoy a lot close to the SUNDRE GOLF COURSE! Your own titled RV lot in Tall Timber - only one hour from Calgary! Great for the whole family and anyone of any age. Bring your RV! This lot is ready to go with a DOUBLE GRAVELLED PARKING PAD, mature TREES for some privacy, 24'X8' DECK and wonderful PATIO area with TIN SHED for additional storage & FIREPIT. Tall Timber is on the East side of Sundre and close to other amenities - shopping, restaurants, grocery, 3 great golf courses and the west country.

Tall Timber Leisure park has some of the best amenities around! INDOOR POOL, hot tub, community centre, 2 PLAYGROUNDS, volleyball court, basketball/PICKLEBALL courts, horseshoe pits, ball diamond, bocce ball lanes, & disc golf. Access to the RED DEER RIVER A BONUS. Coin laundry and shower facilities on site along with boat/ATV storage. Seasonal living / utilities with swipe card access year round.

Your annual condo fee includes water, power, sewer services, garbage as well as unlimited use of the amenities. There is also a SOCIAL COMMITTEE that hosts several great EVENTS THROUGHOUT THE SUMMER. Come enjoy all that Tall Timber has to offer!



## Essential Information

MLS® #	A2220206
Price	\$54,900
Bathrooms	0.00
Acres	0.06
Type	Land
Sub-Type	Residential Land
Status	Active

## Community Information

Address	6 Timber Avenue, 5230 27 Highway
Subdivision	Tall Timber
City	Rural Mountain View County
County	Mountain View County
Province	Alberta
Postal Code	T0M1X0

## Amenities

Amenities	Visitor Parking, Clubhouse, Coin Laundry, Indoor Pool, Playground, Party Room, Racquet Courts, Recreation Facilities, RV/Boat Storage, Trash
Waterfront	River Access

## Additional Information

Date Listed	May 12th, 2025
Days on Market	153
Zoning	P-PCR

## Listing Details

Listing Office	RE/MAX real estate central alberta
----------------	------------------------------------

Data is supplied by Pillar 9â„¢ MLS® System. Pillar 9â„¢ is the owner of the copyright in its MLS® System. Data is deemed reliable but is not guaranteed accurate by Pillar 9â„¢. The trademarks MLS®, Multiple Listing Service® and the associated logos are owned by The Canadian Real Estate Association (CREA) and identify the quality of services provided by real estate professionals who are members of CREA. Used under license.