

\$324,000 - 105 12 Street E, Bow Island

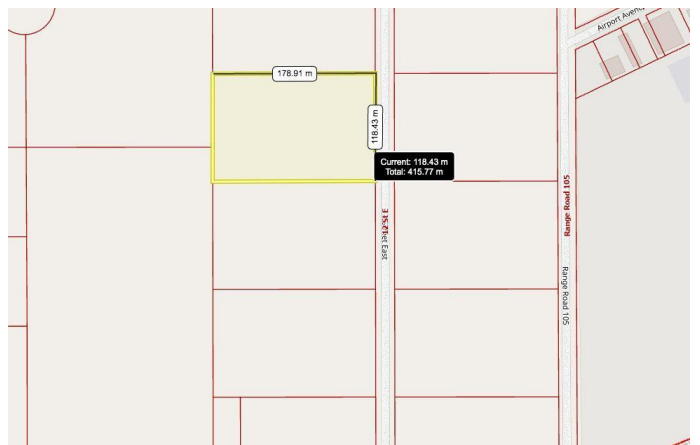
MLS® #A2221208

\$324,000

0 Bedroom, 0.00 Bathroom,
Land on 5.24 Acres

NONE, Bow Island, Alberta

An opportunity to get into Bow Island's Industrial Subdivision! Discover this prime 5.24 acre lot in Bow Island's highly sought-after industrial subdivision. This parcel offers endless possibilities, with a wide range of permitted uses. Strategically located with easy access to main routes, this property is ideal for investors or businesses looking to expand their operations. Take advantage of the limited industrial land supply in Bow Island and secure your future growth. There are concrete footings in place, on the lot, to utilize or remove, depending on your needs.



Essential Information

MLS® #	A2221208
Price	\$324,000
Bathrooms	0.00
Acres	5.24
Type	Land
Sub-Type	Industrial Land
Status	Active

Community Information

Address	105 12 Street E
Subdivision	NONE
City	Bow Island
County	Forty Mile No. 8, County of
Province	Alberta
Postal Code	T0K 0G0

Additional Information

Date Listed	May 14th, 2025
Days on Market	52
Zoning	M-2

Listing Details

Listing Office	RE/MAX MEDALTA REAL ESTATE
----------------	----------------------------

Data is supplied by Pillar 9â„¢ MLS® System. Pillar 9â„¢ is the owner of the copyright in its MLS® System. Data is deemed reliable but is not guaranteed accurate by Pillar 9â„¢. The trademarks MLS®, Multiple Listing Service® and the associated logos are owned by The Canadian Real Estate Association (CREA) and identify the quality of services provided by real estate professionals who are members of CREA. Used under license.