

# \$78,570 - B1, 9515 88 Avenue, Peace River

MLS® #A2223657

**\$78,570**

2 Bedroom, 1.00 Bathroom, 714 sqft

Residential on 0.00 Acres

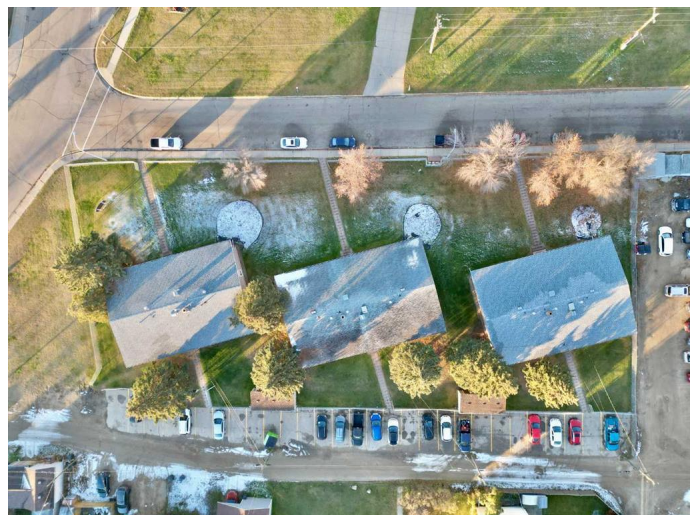
North End., Peace River, Alberta

Parkview Court - This two bedroom, one bathroom, furnished condo is located on the North End of town close to the river. Close to schools, walking and biking paths, park, playground, Baytex Centre and swimming pool. These units are pet friendly, with restrictions. There is assigned parking. The condo fees are reasonable and include many amenities. It is an affordable alternative when purchasing a home for yourself or as an easy-to-rent investment property. This condo unit has a sitting tenant in place who is willing to carry on a lease. If you are looking for a stress free lifestyle with low condo fees...this may be just what you are looking for!

Built in 1963

## Essential Information

MLS® #	A2223657
Price	\$78,570
Bedrooms	2
Bathrooms	1.00
Full Baths	1
Square Footage	714
Acres	0.00
Year Built	1963
Type	Residential
Sub-Type	Apartment
Style	Multi Level Unit
Status	Active



## Community Information

Address	B1, 9515 88 Avenue
Subdivision	North End.
City	Peace River
County	Peace No. 135, M.D. of
Province	Alberta
Postal Code	T8S1G6

## Amenities

Amenities	Park, Parking, Playground, Pool, Snow Removal, Trash
Parking Spaces	1
Parking	Parking Pad

## Interior

Interior Features	Laminate Counters, Open Floorplan, Separate Entrance, Vinyl Windows
Appliances	Dishwasher, Electric Stove, Refrigerator, Washer/Dryer Stacked
Heating	Baseboard
Cooling	None
# of Stories	2

## Exterior

Exterior Features	Private Entrance, Storage
Roof	Asphalt
Construction	Mixed
Foundation	Poured Concrete

## Additional Information

Date Listed	May 22nd, 2025
Days on Market	29
Zoning	R-medium density

## Listing Details

Listing Office	Royal LePage Valley Realty
----------------	----------------------------

Data is supplied by Pillar 9â„¢ MLS® System. Pillar 9â„¢ is the owner of the copyright in its MLS® System. Data is deemed reliable but is not guaranteed accurate by Pillar 9â„¢. The trademarks MLS®, Multiple Listing Service® and the associated logos are owned by The Canadian Real Estate Association (CREA) and identify the quality of services provided by real estate professionals who are members of CREA. Used under license.