

# \$735,000 - 135 Drake Landing Heath, Okotoks

MLS® #A2226701

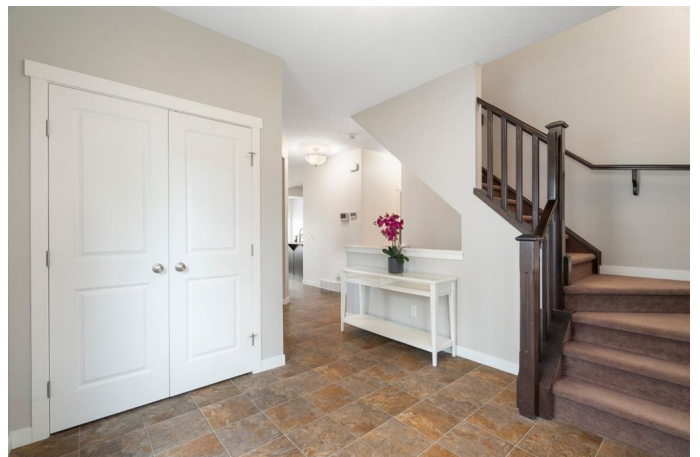
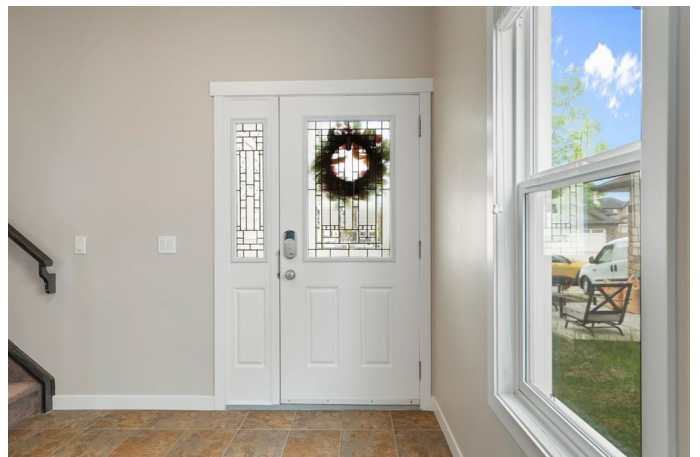
**\$735,000**

5 Bedroom, 4.00 Bathroom, 2,441 sqft

Residential on 0.11 Acres

Drake Landing, Okotoks, Alberta

Welcome Home. We are delighted to present to you this fully developed two-storey home offering over 3,400 sq ft of finished living space that is ideally located in one of Okotoks' most sought-after communities. With 5 bedrooms, 3.5 bathrooms, and a versatile layout that is perfect for growing families, this home delivers on both comfort and convenience. The main floor features a functional open-concept layout starting with the large and sunny front foyer that welcomes you. Moving through to the spacious front flex room that offers the perfect space for a home office or play room. The back of the home is lined with large windows that flood the main floor with natural light and offers sightlines to the backyard—perfect for watching the kids playing in the fully fenced backyard. The well laid out kitchen features rich cabinetry, a central island with bar seating, and a large walk-through pantry that leads to a functional mudroom with built-in storage. The adjacent dining area is the perfect space for family meals and has a garden door leading to the back deck that offers the perfect place for enjoying sunny days and summer BBQs with a bonus retractable awning offering great shade. The yard features a great space for kids to play and offers the flexibility to have RV parking. Upstairs, you'll find four generously sized bedrooms, including a serene primary retreat with a large walk-in closet and a 5-piece ensuite featuring dual sinks, a soaker tub, and a separate shower.



The additional bedrooms share a full 4-piece bathroom with double sinksâ€”perfect for busy mornings. The upper-floor bonus room with a cozy fireplace adds valuable extra space for relaxing, playing, or hosting guests. A dedicated laundry room with shelving adds everyday convenience and functionality. The fully finished basement (with permits) extends your living space even further, offering a large recreation room with stylish vinyl plank flooring, a fifth bedroom, a beautiful 4-piece bathroom, and ample room for hobbies or guests. An oversized double attached garage and spacious driveway complete the package. Located in the vibrant community of Drake Landing, this home is surrounded by scenic walking paths, playgrounds and a dog park, as well as good access to schools as well as easy access to commute to Calgary.

Built in 2012

**Essential Information**

MLS® #	A2226701
Price	\$735,000
Bedrooms	5
Bathrooms	4.00
Full Baths	3
Half Baths	1
Square Footage	2,441
Acres	0.11
Year Built	2012
Type	Residential
Sub-Type	Detached
Style	2 Storey
Status	Active

**Community Information**

Address	135 Drake Landing Heath
Subdivision	Drake Landing

City	Okotoks
County	Foothills County
Province	Alberta
Postal Code	T1S 0G8

### Amenities

Parking Spaces	4
Parking	Double Garage Attached
# of Garages	2

### Interior

Interior Features	Bar, Built-in Features, Double Vanity, Kitchen Island, Pantry, Soaking Tub
Appliances	Dishwasher, Dryer, Electric Stove, Microwave, Refrigerator, Washer, Window Coverings
Heating	Forced Air
Cooling	Central Air
Fireplace	Yes
# of Fireplaces	1
Fireplaces	Gas
Has Basement	Yes
Basement	Finished, Full

### Exterior

Exterior Features	Balcony, Private Yard, Awning(s)
Lot Description	Back Lane, Back Yard, Cul-De-Sac
Roof	Asphalt Shingle
Construction	Vinyl Siding, Wood Frame
Foundation	Poured Concrete

### Additional Information

Date Listed	June 3rd, 2025
Days on Market	37
Zoning	TN

### Listing Details

Listing Office	CIR Realty
----------------	------------

Data is supplied by Pillar 9â„¢ MLS® System. Pillar 9â„¢ is the owner of the copyright in its MLS® System. Data is deemed reliable but is not guaranteed accurate by Pillar 9â„¢. The trademarks MLS®, Multiple Listing Service® and the associated logos are owned by The Canadian Real Estate Association (CREA) and identify the quality of services

provided by real estate professionals who are members of CREA. Used under license.