

\$759,900 - 18 Wyndham Park View, Carseland

MLS® #A2227461

\$759,900

5 Bedroom, 3.00 Bathroom, 1,632 sqft
Residential on 0.23 Acres

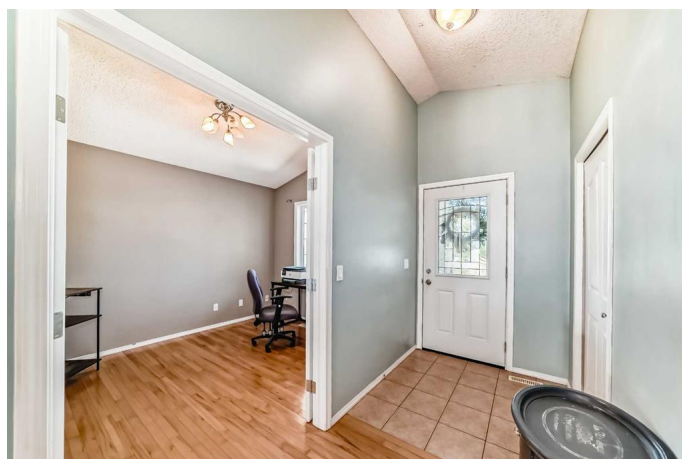
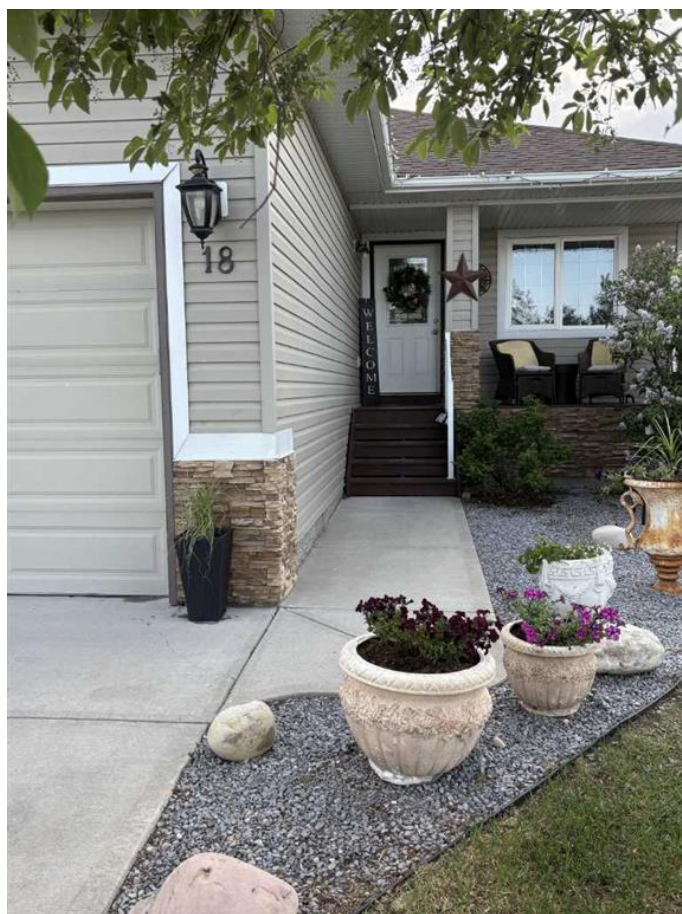
NONE, Carseland, Alberta

Visit REALTOR® website for additional information. Just minutes from the Bow River & backing Speargrass Golf Course! This gorgeous WALKOUT bungalow with 2 kitchens, 4 bdrms & office (5th bdrm) & 3027 sf of living space. This home offers 2 separate living spaces up & down! If you value rural lifestyle without the work of an acreage, this large lot is one of the biggest in the cul-de-sac. The home itself has 2 separate living areas boasting bright light throughout, 2 master bedrooms/ensuites (checkout that lower level master bedroom/walkin closet) & 2 laundry rooms. Your walkout patio boasts French doors to your private backyard offers refuge for your morning coffee (no back neighbours) in a quiet oasis just 7 mins-Carseland, 20 mins-Strathmore & 35 mins from Calgary. Speargrass prides itself in homeownership & community! 50/yr community association fee-optional. New clubhouse coming!

Built in 2007

Essential Information

| | |
|------------|-----------|
| MLS® # | A2227461 |
| Price | \$759,900 |
| Bedrooms | 5 |
| Bathrooms | 3.00 |
| Full Baths | 3 |



| | |
|----------------|-------------|
| Square Footage | 1,632 |
| Acres | 0.23 |
| Year Built | 2007 |
| Type | Residential |
| Sub-Type | Detached |
| Style | Bungalow |
| Status | Active |

Community Information

| | |
|-------------|----------------------|
| Address | 18 Wyndham Park View |
| Subdivision | NONE |
| City | Carseland |
| County | Wheatland County |
| Province | Alberta |
| Postal Code | T0J 0M0 |

Amenities

| | |
|----------------|------------------------|
| Parking Spaces | 2 |
| Parking | Double Garage Attached |
| # of Garages | 2 |

Interior

| | |
|-------------------|---|
| Interior Features | Central Vacuum, Closet Organizers, Double Vanity, Jetted Tub, Kitchen Island, Recessed Lighting, See Remarks, Separate Entrance, Stone Counters, Storage, Track Lighting, Vaulted Ceiling(s), Walk-In Closet(s), Breakfast Bar, Ceiling Fan(s), Crown Molding, French Door, Granite Counters, High Ceilings, Laminate Counters, Pantry, Soaking Tub, Sump Pump(s) |
| Appliances | Dishwasher, Refrigerator, Washer/Dryer, Window Coverings, Dryer, Freezer, Microwave Hood Fan, See Remarks |
| Heating | Fireplace(s), Forced Air |
| Cooling | Other |
| Fireplace | Yes |
| # of Fireplaces | 2 |
| Fireplaces | Gas, Electric |
| Has Basement | Yes |
| Basement | Finished, Full, Exterior Entry, Suite |

Exterior

| | |
|-------------------|---|
| Exterior Features | Garden, Private Entrance, Barbecue, Fire Pit, Playground, Private Yard, |
|-------------------|---|

| | |
|-----------------|---|
| | Rain Gutters, Storage |
| Lot Description | Backs on to Park/Green Space, Clubhouse, Creek/River/Stream Reserve, Fruit Trees/Shrub(s), Golf Course, Gentle Sloping, Large Backyard, Pie Shaped Lot, Private |
| Roof | Asphalt |
| Construction | Vinyl Siding, Wood Frame |
| Foundation | Poured Concrete |



Additional Information

| | |
|----------------|----------------|
| Date Listed | June 4th, 2025 |
| Days on Market | 81 |
| Zoning | S-LDR |

Listing Details

| | |
|----------------|-----------------------|
| Listing Office | PG Direct Realty Ltd. |
|----------------|-----------------------|

Data is supplied by Pillar 9â„¢ MLS® System. Pillar 9â„¢ is the owner of the copyright in its MLS® System. Data is deemed reliable but is not guaranteed accurate by Pillar 9â„¢. The trademarks MLS®, Multiple Listing Service® and the associated logos are owned by The Canadian Real Estate Association (CREA) and identify the quality of services provided by real estate professionals who are members of CREA. Used under license.