

\$439,900 - 1217 29 Street S, Lethbridge

MLS® #A2229795

\$439,900

5 Bedroom, 3.00 Bathroom, 1,334 sqft
Residential on 0.13 Acres

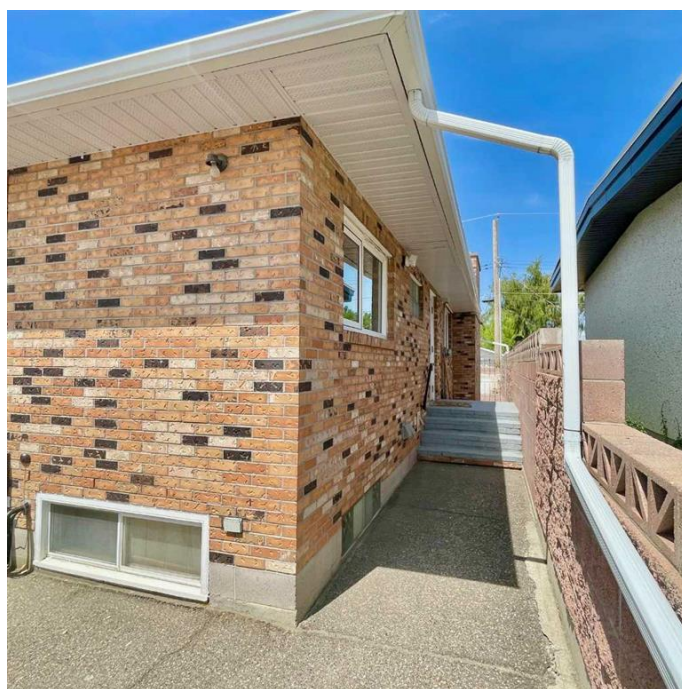
Lakeview, Lethbridge, Alberta

Pride of ownership shines throughout this lovingly maintained 1,334 sq ft bungalow, nestled on a desirable lot in the Lakeview School District. Offering 3+2 bedrooms and 3 full bathrooms, there's plenty of space for family, guests, or a dedicated home office. Updates over the years include furnace, roof, upstairs windows, bathroom, and a bright, spacious kitchen/dining area featuring a cozy gas fireplace. The corner lot offers ample off-street parking, RV parking, and a massive 28' x 33' attached garage with tall overhead clearance – ideal for hobbyists, mechanics, or extra storage. Enjoy the low-maintenance yard, designed for busy lifestyles or those looking to simplify outdoor upkeep. This home has been impeccably cared for, with true pride of ownership throughout! Whether you're up sizing, downsizing, or looking for a move-in-ready home in a well established neighborhood, this one-of-a-kind property is not to be missed.

Built in 1961

Essential Information

MLS® #	A2229795
Price	\$439,900
Bedrooms	5
Bathrooms	3.00



Full Baths	3
Square Footage	1,334
Acres	0.13
Year Built	1961
Type	Residential
Sub-Type	Detached
Style	Bungalow
Status	Active

Community Information

Address	1217 29 Street S
Subdivision	Lakeview
City	Lethbridge
County	Lethbridge
Province	Alberta
Postal Code	T1K 2X2

Amenities

Parking Spaces	7
Parking	Triple Garage Attached, Boat, RV Access/Parking
# of Garages	2

Interior

Interior Features	Central Vacuum, Kitchen Island, See Remarks, Vinyl Windows
Appliances	Central Air Conditioner, Dishwasher, Garage Control(s), Refrigerator, Stove(s), Washer/Dryer, Window Coverings
Heating	Forced Air, Natural Gas
Cooling	Central Air
Fireplace	Yes
# of Fireplaces	1
Fireplaces	Gas, Dining Room
Has Basement	Yes
Basement	Finished, Full

Exterior

Exterior Features	Courtyard, Private Entrance, Private Yard
Lot Description	Back Lane, City Lot, Corner Lot, Front Yard, Landscaped, Low Maintenance Landscape, Street Lighting, Paved
Roof	Asphalt Shingle

Construction	Brick, Concrete, Wood Frame
Foundation	Poured Concrete, Combination

Additional Information

Date Listed	June 22nd, 2025
Days on Market	14
Zoning	R-L

Listing Details

Listing Office	SUTTON GROUP - LETHBRIDGE
----------------	---------------------------

Data is supplied by Pillar 9â„¢ MLS® System. Pillar 9â„¢ is the owner of the copyright in its MLS® System. Data is deemed reliable but is not guaranteed accurate by Pillar 9â„¢. The trademarks MLS®, Multiple Listing Service® and the associated logos are owned by The Canadian Real Estate Association (CREA) and identify the quality of services provided by real estate professionals who are members of CREA. Used under license.