

# \$259,900 - 3104 31 Street S, Lethbridge

MLS® #A2230061

## \$259,900

2 Bedroom, 2.00 Bathroom, 1,523 sqft

Mobile on 0.00 Acres

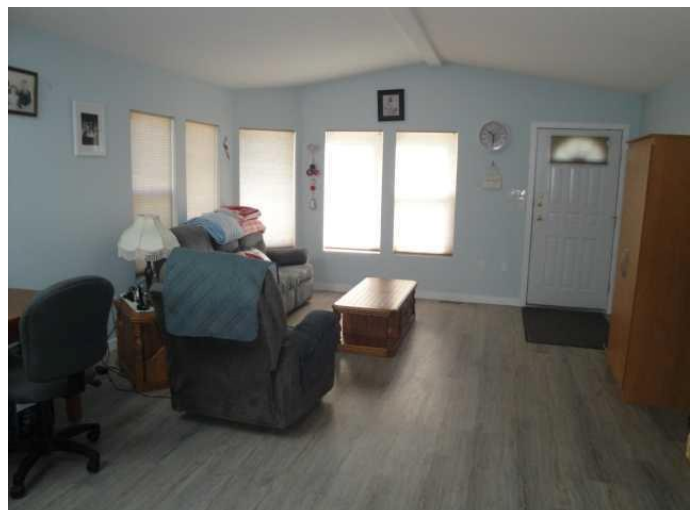
Park Bridge Estates, Lethbridge, Alberta

Spacious and bright, this 1,523 sq ft 2-bedroom home combines comfort and versatility in one well-designed package. Enjoy vaulted ceilings, newer flooring throughout, and large windows—including multiple skylights and bay windows—that fill the space with natural light. The custom kitchen offers style and function, while the generous primary bedroom features its own ensuite and walk in closet. A large living room and flex room provide endless layout options. The main bath includes a unique sit-down tub for added comfort. Step outside to front and rear decks perfect for relaxing or entertaining. A double attached garage and two year old eavestrough guards (with warranty transferable to new owner) completes the package with everyday convenience. Buyer must be approved by Parkbridge Estates management.

Built in 1994

## Essential Information

MLS® #	A2230061
Price	\$259,900
Bedrooms	2
Bathrooms	2.00
Full Baths	2
Square Footage	1,523
Acres	0.00
Year Built	1994



Type	Mobile
Sub-Type	Mobile
Style	Single Wide Mobile Home
Status	Active

### Community Information

Address	3104 31 Street S
Subdivision	Park Bridge Estates
City	Lethbridge
County	Lethbridge
Province	Alberta
Postal Code	T1K 6T1

### Amenities

Parking Spaces	3
Parking	Double Garage Attached
# of Garages	2

### Interior

Appliances	Refrigerator, Stove(s)
Heating	Forced Air
Cooling	Central Air

### Exterior

Roof	Asphalt Shingle
------	-----------------

### Additional Information

Date Listed	June 20th, 2025
Days on Market	17

### Listing Details

Listing Office	RE/MAX REAL ESTATE - LETHBRIDGE
----------------	---------------------------------

Data is supplied by Pillar 9â„¢ MLS® System. Pillar 9â„¢ is the owner of the copyright in its MLS® System. Data is deemed reliable but is not guaranteed accurate by Pillar 9â„¢. The trademarks MLS®, Multiple Listing Service® and the associated logos are owned by The Canadian Real Estate Association (CREA) and identify the quality of services provided by real estate professionals who are members of CREA. Used under license.