

\$219,000 - Range Road 7-2, Rural Clearwater County

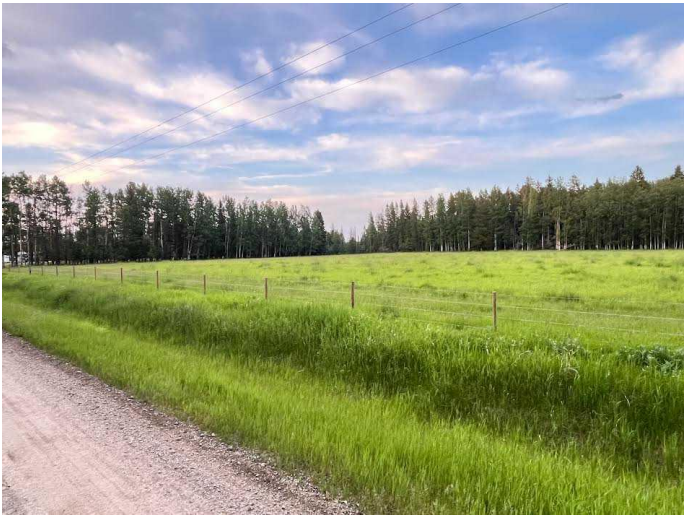
MLS® #A2231460

\$219,000

0 Bedroom, 0.00 Bathroom,
Land on 4.99 Acres

NONE, Rural Clearwater County, Alberta

Escape the hustle and build your dream on this 4.99-acre parcel tucked away on a quiet dead-end road. Just 15 minutes from town, this blank slate offers the perfect blend of privacy and convenience. With no utilities currently on site, services are nearby, making this an ideal opportunity to shape your own vision from the ground up. Whether youâ€™re dreaming of a country home, hobby farm, or a weekend retreat, the possibilities are wide open.



Essential Information

| | |
|-----------|------------------|
| MLS® # | A2231460 |
| Price | \$219,000 |
| Bathrooms | 0.00 |
| Acres | 4.99 |
| Type | Land |
| Sub-Type | Residential Land |
| Status | Active |

Community Information

| | |
|-------------|-------------------------|
| Address | Range Road 7-2 |
| Subdivision | NONE |
| City | Rural Clearwater County |
| County | Clearwater County |
| Province | Alberta |
| Postal Code | T4T 1A3 |

Additional Information

| | |
|----------------|-----------------|
| Date Listed | June 16th, 2025 |
| Days on Market | 73 |
| Zoning | CRA |

Listing Details

| | |
|----------------|------------------------------------|
| Listing Office | Royal LePage Tamarack Trail Realty |
|----------------|------------------------------------|

Data is supplied by Pillar 9â„¢ MLS® System. Pillar 9â„¢ is the owner of the copyright in its MLS® System. Data is deemed reliable but is not guaranteed accurate by Pillar 9â„¢. The trademarks MLS®, Multiple Listing Service® and the associated logos are owned by The Canadian Real Estate Association (CREA) and identify the quality of services provided by real estate professionals who are members of CREA. Used under license.