

# \$739,000 - 918 Maydell Palmer Vista N, Lethbridge

MLS® #A2231594

**\$739,000**

5 Bedroom, 4.00 Bathroom, 1,873 sqft  
Residential on 0.12 Acres

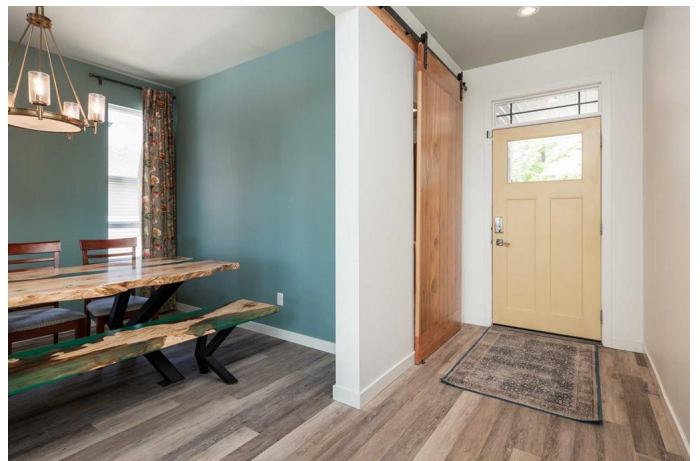
Legacy Ridge / Hardieville, Lethbridge, Alberta

Welcome to 918 Maydell Palmer Vista – a stunning, ultra-modern two-storey walkout home perched along the coulees. This former 2015 STARS Lottery home offers 5 bedrooms, 3.5 bathrooms, and high-end finishes across every level.

From the moment you step inside, you™ll be captivated by the soaring 18™ ceilings, expansive floor-to-ceiling windows, and spectacular coulee views visible from every level. The main floor features a bright front office/den, a formal dining area, and an elegant living room anchored by a striking tiled fireplace. The chef™s kitchen is equally impressive with quartz countertops, a large island, high-end KitchenAid appliances including a gas stove and built-in wall oven/microwave, custom cabinetry with roll-out drawers, and a pantry – all framed by breathtaking scenery.

A unique highlight of the main level is the private bedroom suite with its own 3-piece bath – ideal for multi-generational living or guests. You'll also find a spacious laundry area, powder room, and access to the heated, finished 24' x 24' garage. The main level also steps onto a spacious deck where you can enjoy the view, and there are stairs for easy access to the yard.

Upstairs, retreat to a serene and spacious



primary suite with more stunning views, a luxurious 5-piece ensuite featuring a soaker tub and walk-in shower, and a loft-style landing â€” perfect for a reading nook or workspace.

The walk-out lower level offers even more space for entertaining with a family room, second fireplace, and a wet bar with wine fridge. Three additional bedrooms, a full bathroom, and abundant storage complete this level. The covered patio offers another opportunity to enjoy the view and the outdoors.

This home comes complete with 25 solar panels making reduced utility bills another benefit of this home. Contact your favorite REALTOR® to schedule a viewing today!

Built in 2015

### Essential Information

MLS® #	A2231594
Price	\$739,000
Bedrooms	5
Bathrooms	4.00
Full Baths	3
Half Baths	1
Square Footage	1,873
Acres	0.12
Year Built	2015
Type	Residential
Sub-Type	Detached
Style	2 Storey
Status	Active

### Community Information

Address	918 Maydell Palmer Vista N
Subdivision	Legacy Ridge / Hardieville
City	Lethbridge
County	Lethbridge
Province	Alberta

Postal Code T1H 7B7

### Amenities

Parking Spaces 4  
Parking Concrete Driveway, Double Garage Attached, Heated Garage  
# of Garages 2

### Interior

Interior Features Built-in Features, Kitchen Island, Pantry, Walk-In Closet(s), Wet Bar  
Appliances See Remarks  
Heating Forced Air  
Cooling Central Air  
Fireplace Yes  
# of Fireplaces 2  
Fireplaces Family Room, Gas, Living Room  
Has Basement Yes  
Basement Finished, Full

### Exterior

Exterior Features None  
Lot Description Back Yard, Landscaped, Standard Shaped Lot, Underground Sprinklers, Views, Creek/River/Stream/Pond  
Roof Asphalt Shingle  
Construction Composite Siding, Stone, Vinyl Siding  
Foundation Poured Concrete

### Additional Information

Date Listed June 20th, 2025  
Days on Market 17  
Zoning R-L

### Listing Details

Listing Office Lethbridge Real Estate.com

Data is supplied by Pillar 9â„¢ MLSÂ® System. Pillar 9â„¢ is the owner of the copyright in its MLSÂ® System. Data is deemed reliable but is not guaranteed accurate by Pillar 9â„¢. The trademarks MLSÂ®, Multiple Listing ServiceÂ® and the associated logos are owned by The Canadian Real Estate Association (CREA) and identify the quality of services provided by real estate professionals who are members of CREA. Used under license.