

# \$205,000 - 737 Bridgeview Road, Rural Ponoka County

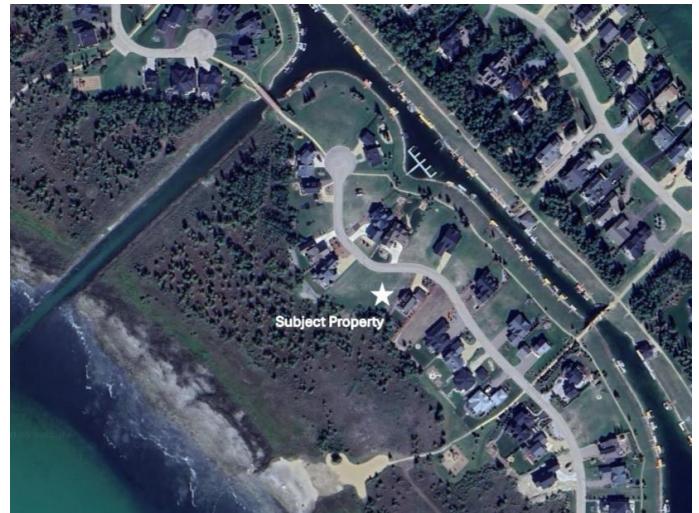
MLS® #A2232192

**\$205,000**

0 Bedroom, 0.00 Bathroom,  
Land on 0.33 Acres

Meridian Beach, Rural Ponoka County, Alberta

Design and build your dream home on this beautiful lake front lot that offers great views of Gull Lake. The lot is approximately 14,600 square feet, 1/3 of an Acre. It includes a boat slip in the canal with direct access to Gull Lake. The community of Meridian Beach has much to offer including, paved roads, private sandy beaches, tennis courts, parks, playgrounds, basketball court, community hall, walking trails, architecturally unique footbridges, and spectacular scenery. Many community events. There is domestic water service and sewage treatment. Utilities are to the lot line. There is On-site homeowners' Society to manage facilities and maintain standards.



## Essential Information

MLS® #	A2232192
Price	\$205,000
Bathrooms	0.00
Acres	0.33
Type	Land
Sub-Type	Residential Land
Status	Active

## Community Information

Address	737 Bridgeview Road
Subdivision	Meridian Beach
City	Rural Ponoka County

County	Ponoka County
Province	Alberta
Postal Code	T0C 2J0

### Amenities

Amenities	Clubhouse, Playground, Recreation Facilities, Beach Access, Boating, Gazebo, Park, Racquet Courts, Visitor Parking
-----------	--

### Exterior

Lot Description	Lake, No Neighbours Behind, Close to Clubhouse
-----------------	--

### Additional Information

Date Listed	June 27th, 2025
Days on Market	60
Zoning	R1
HOA Fees	600
HOA Fees Freq.	ANN

### Listing Details

Listing Office	Royal LePage Lifestyles Realty
----------------	--------------------------------

Data is supplied by Pillar 9â„¢ MLSÂ® System. Pillar 9â„¢ is the owner of the copyright in its MLSÂ® System. Data is deemed reliable but is not guaranteed accurate by Pillar 9â„¢. The trademarks MLSÂ®, Multiple Listing ServiceÂ® and the associated logos are owned by The Canadian Real Estate Association (CREA) and identify the quality of services provided by real estate professionals who are members of CREA. Used under license.