

\$649,900 - 222 6a Street Ne, Calgary

MLS® #A2232262

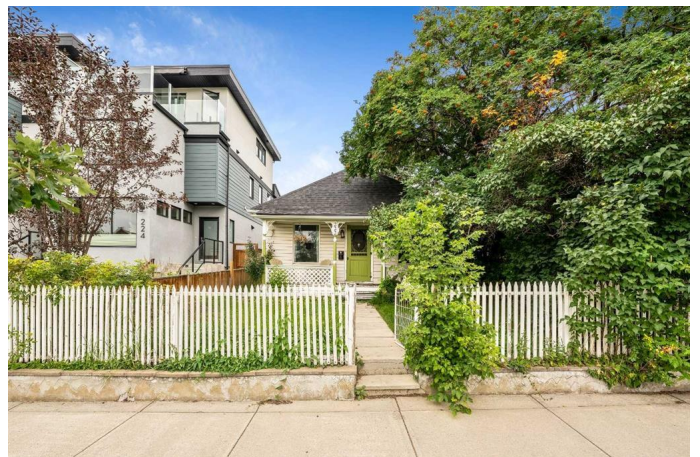
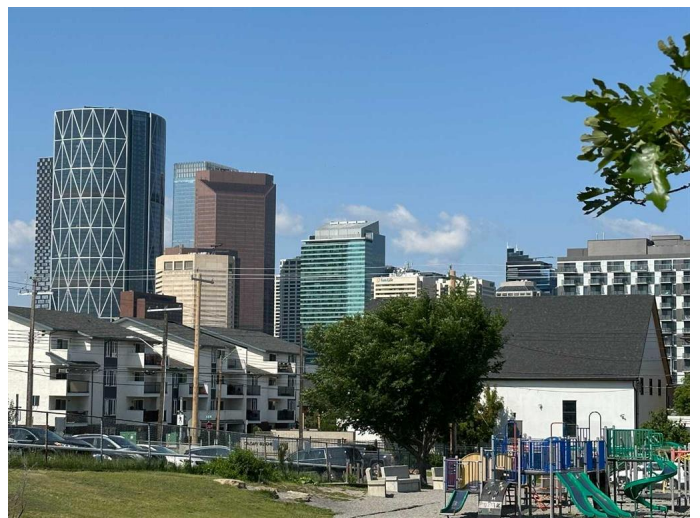
\$649,900

2 Bedroom, 1.00 Bathroom, 963 sqft

Residential on 0.08 Acres

Bridgeland/Riverside, Calgary, Alberta

This fantastic property, with no condo fees, will appeal to buyers seeking to live in or develop in the highly sought-after community of Bridgeland, offering excellent holding potential. With DC Zoning, this lot has unique allowable uses ranging from residential (e.g., single-family, up/down duplexes, stacked condos) to mixed-use and commercial potentials, including small home-based businesses and dayhome/after-school care potential with the rear entrance (subject to approval and permitting by the city or municipality). This charming century bungalow offers sweeping views of the downtown skyline as it is located across from "Riverside Bungalow" with open green space and a playground! Inside, the home features a functional floor plan with fantastic finishing details, including LVP luxury vinyl plank floors (hardwood floors underneath), wainscoting in the dining room, newer carpet, and classic black and white flooring details. The spacious living room faces west and seamlessly opens to a lovely, open-concept dining room, perfect for entertaining. The kitchen is generously sized, featuring a timeless black and white checkered floor, and is equipped with stainless steel appliances, including a gas stove for cooking, a dishwasher, and a refrigerator. It provides ample laminate counter space for preparing meals. Adjacent to the kitchen is an updated 4-piece washroom featuring a refinished claw-foot tub, newer cabinetry with quartz, and more timeless black and white



tiling details! Two well-proportioned bedrooms (or flex/space) complete this charming bungalow. The main floor features a laundry room and a back porch, as well as vinyl windows with newer blinds, which complete the interior. The basement has tons of storage and potential, featuring a newer hot water tank and mid-efficiency furnace. With minimal investment in the basement, this space can be transformed into a versatile area suitable for a home office, crafting activities, or board games, limited only by your imagination. In the back, it leads out to a concrete patio area, which in turn connects to the oversized garage and a rear alley. Outside, you will find that the shingles were replaced within the last five years, and the yard features a landscaped area with trees and loads of perennials. This vintage home is ideally situated within walking distance of downtown and close to a wealth of amenities, including shopping, schools, playgrounds, river paths, the Zoo, golf courses, and public transportation. Great restaurants and coffee shops are just steps away. Come check out this excellent listing with so many possibilities! Please note that 24 hours' notice is required for showings for tenants who work from home.

Built in 1912

Essential Information

MLS® #	A2232262
Price	\$649,900
Bedrooms	2
Bathrooms	1.00
Full Baths	1
Square Footage	963
Acres	0.08
Year Built	1912
Type	Residential

Sub-Type	Detached
Style	Bungalow
Status	Active

Community Information

Address	222 6a Street Ne
Subdivision	Bridgeland/Riverside
City	Calgary
County	Calgary
Province	Alberta
Postal Code	T2E 4A5

Amenities

Parking Spaces	2
Parking	Alley Access, Single Garage Detached, Oversized
# of Garages	2

Interior

Interior Features	Ceiling Fan(s), Laminate Counters, See Remarks, Vinyl Windows
Appliances	Dishwasher, Dryer, Garage Control(s), Gas Stove, Refrigerator, Washer, Window Coverings
Heating	Forced Air, Natural Gas, Mid Efficiency
Cooling	None
Has Basement	Yes
Basement	Partial, Unfinished

Exterior

Exterior Features	None
Lot Description	Back Lane, City Lot, Landscaped, Level, Rectangular Lot, See Remarks, Views, Few Trees
Roof	Asphalt Shingle
Construction	Vinyl Siding, Wood Frame
Foundation	Poured Concrete

Additional Information

Date Listed	June 23rd, 2025
Days on Market	10
Zoning	DC

Listing Details

Listing Office

CIR Realty

Data is supplied by Pillar 9â„¢ MLSÂ® System. Pillar 9â„¢ is the owner of the copyright in its MLSÂ® System. Data is deemed reliable but is not guaranteed accurate by Pillar 9â„¢. The trademarks MLSÂ®, Multiple Listing ServiceÂ® and the associated logos are owned by The Canadian Real Estate Association (CREA) and identify the quality of services provided by real estate professionals who are members of CREA. Used under license.