

\$599,900 - 235 Carmel Close Ne, Calgary

MLS® #A2232707

\$599,900

4 Bedroom, 4.00 Bathroom, 1,490 sqft

Residential on 0.07 Acres

Monterey Park, Calgary, Alberta

Welcome to this like-new 4-bedroom, 3.5-bathroom home in the heart of Monterey Park—fully renovated with modern style and thoughtful functionality, all in a mature and established community.

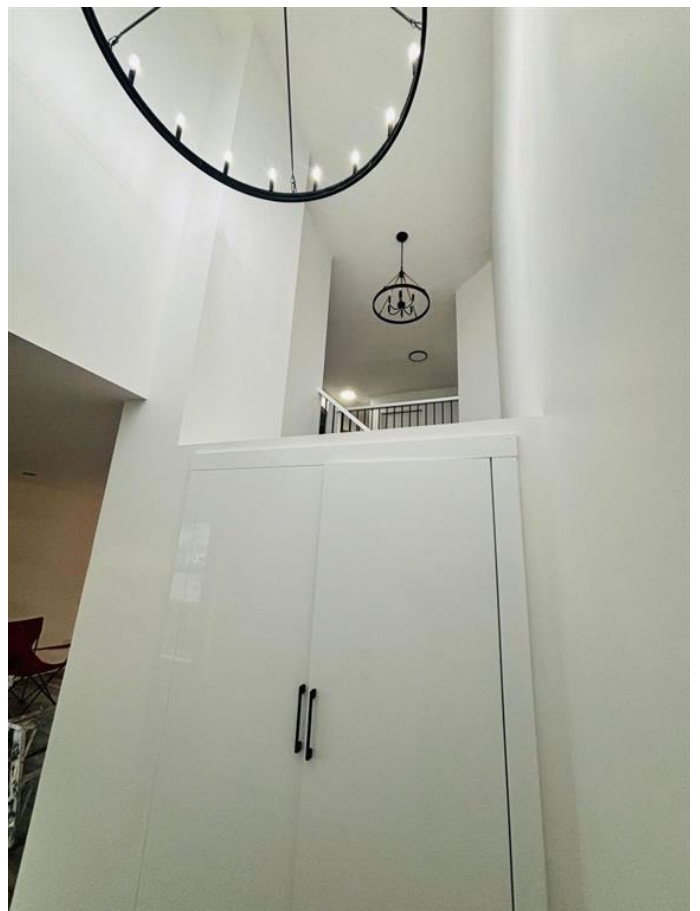
Step inside to a bright, open-concept main floor where the living, dining, and kitchen areas flow seamlessly. Natural light fills the space, enhanced by brand-new flooring, fresh paint, stylish window blinds, and modern light fixtures. A convenient powder room and stacked laundry on the main floor add practicality for everyday living.

The designer kitchen is a true highlight—featuring stainless steel appliances, sleek cabinetry, and ample counter space for all your culinary needs.

Upstairs, you’ll find three generous bedrooms, including a spacious primary suite with its own 4-piece ensuite, plus an updated main bath for the rest of the family.

Downstairs, the fully finished basement features a 1-bedroom illegal suite with a separate entrance and its own dedicated laundry area—perfect for extended family or rental income.

Situated on an RC-G zoned lot, this property opens the door to future development opportunities—such as building a garage with



a garden suite or ADU (subject to City of Calgary permits and approvals). Rear parking for two vehicles and a peaceful street location complete the package.

All the big-ticket upgradesâ€”layout, appliances, finishingsâ€”have been taken care of. Itâ€™s a brand-new home feel in a well-connected, established neighborhood near schools, parks, shopping, and transit.

?? Donâ€™t miss outâ€”book your private showing today and discover the full potential of this incredible home!

Built in 1994

Essential Information

MLS® #	A2232707
Price	\$599,900
Bedrooms	4
Bathrooms	4.00
Full Baths	3
Half Baths	1
Square Footage	1,490
Acres	0.07
Year Built	1994
Type	Residential
Sub-Type	Detached
Style	2 Storey
Status	Active

Community Information

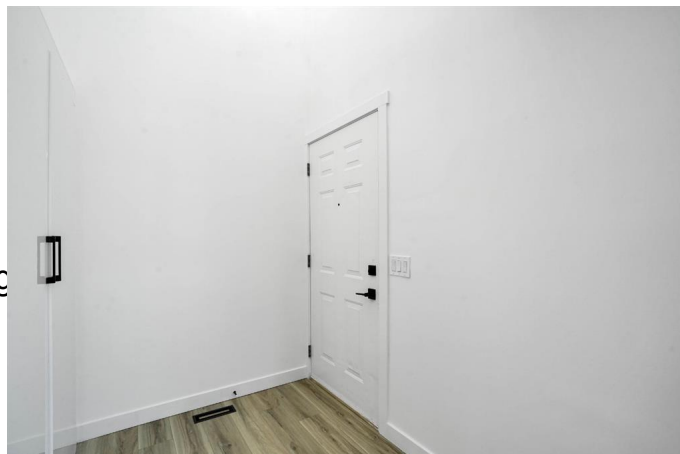
Address	235 Carmel Close Ne
Subdivision	Monterey Park
City	Calgary
County	Calgary
Province	Alberta
Postal Code	T1Y6Z4

Amenities

Parking Spaces	2
Parking	Off Street

Interior

Interior Features	Chandelier, Open Floorplan,
Appliances	Dishwasher, Electric Range, Washer/Dryer Stacked
Heating	Central, Natural Gas
Cooling	None
Fireplace	Yes
# of Fireplaces	1
Fireplaces	Electric, Living Room
Has Basement	Yes
Basement	Finished, Full



Exterior

Exterior Features	Covered Courtyard
Lot Description	Back Yard
Roof	Asphalt Shingle
Construction	Vinyl Siding
Foundation	Poured Concrete

Additional Information

Date Listed	June 19th, 2025
Days on Market	16
Zoning	R-CG

Listing Details

Listing Office	eXp Realty
----------------	------------

Data is supplied by Pillar 9â„¢ MLSÂ® System. Pillar 9â„¢ is the owner of the copyright in its MLSÂ® System. Data is deemed reliable but is not guaranteed accurate by Pillar 9â„¢. The trademarks MLSÂ®, Multiple Listing ServiceÂ® and the associated logos are owned by The Canadian Real Estate Association (CREA) and identify the quality of services provided by real estate professionals who are members of CREA. Used under license.