

\$471,800 - 105, 211 Quarry Way Se, Calgary

MLS® #A2233860

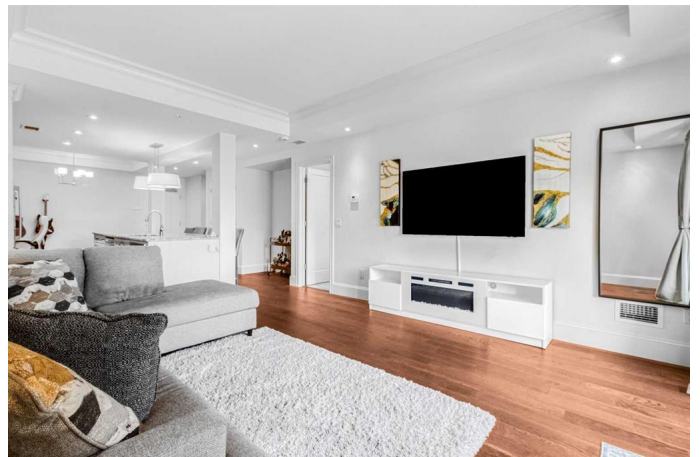
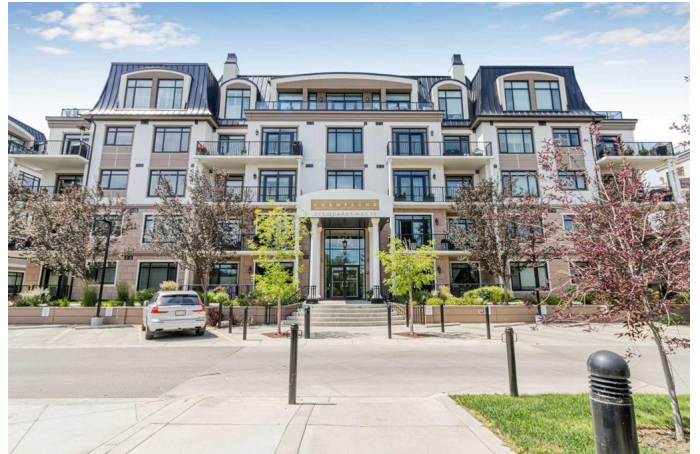
\$471,800

1 Bedroom, 1.00 Bathroom, 863 sqft

Residential on 0.00 Acres

Douglasdale/Glen, Calgary, Alberta

Champagne wishes and caviar dreams come true in this luxurious condo at the prestigious Champagne building in Quarry Park! The open concept ground-level unit exudes spaciousness and elegance with every architectural detail featuring a monochrome minimalist design, emphasizing the stark contrast of the rich hardwood floors. For a touch of drama, crown molding details are added. The stunning kitchen boasts an oversized granite island, upgraded stainless steel appliances including a gas stove and built-in microwave, a generous pantry, and deep pot drawers for extra storage. Tray ceilings with crown moulding add a touch of sophistication throughout. The expansive living room flows seamlessly onto a private, covered patio through charming French doors, complete with a BBQ gas hookup and a convenient gate for easy access. Tucked beside the kitchen is a smartly designed home office nook for added functionality. The spacious primary suite is a true retreat, offering a large walk-in closet and a posh ensuite with a soaker tub and a full glass stand-up shower. For added convenience, this unit includes in-suite laundry, one titled underground parking stall with ample visitor parking just steps from the unit, , and a private storage locker. Residents also enjoy amenities such as secure bicycle storage, access to the building's underground car wash, a serene gazebo, and a picnic area. The exquisite building backs onto the picturesque Bow River



and its extensive pathways. Quarry Park offers an unbeatable lifestyle with everything you need right in the communityâ€™ tennis courts, the state-of-the-art YMCA, public library, boutique shopping, dining, the Cardel Theatre, scenic parks, and playgroundsâ€™all just steps from your door.

Built in 2015

Essential Information

MLS® #	A2233860
Price	\$471,800
Bedrooms	1
Bathrooms	1.00
Full Baths	1
Square Footage	863
Acres	0.00
Year Built	2015
Type	Residential
Sub-Type	Apartment
Style	Single Level Unit
Status	Active

Community Information

Address	105, 211 Quarry Way Se
Subdivision	Douglasdale/Glen
City	Calgary
County	Calgary
Province	Alberta
Postal Code	T2C 5M6

Amenities

Amenities	Bicycle Storage, Car Wash, Elevator(s), Park, Parking, Picnic Area, Secured Parking, Snow Removal, Storage, Visitor Parking, Gazebo
Parking Spaces	1
Parking	Heated Garage, Parkade, Titled, Underground
# of Garages	1

Interior

Interior Features	Granite Counters, High Ceilings, Kitchen Island, No Smoking Home, Crown Molding
Appliances	Central Air Conditioner, Dishwasher, Garage Control(s), Gas Stove, Range Hood, Washer/Dryer Stacked, Window Coverings, Oven-Built-In, ENERGY STAR Qualified Refrigerator
Heating	Forced Air
Cooling	Central Air
# of Stories	5

Exterior

Exterior Features	Other
Construction	Brick, Concrete, Metal Siding

Additional Information

Date Listed	July 11th, 2025
Days on Market	2
Zoning	DC
HOA Fees	270
HOA Fees Freq.	ANN

Listing Details

Listing Office	Real Broker
----------------	-------------

Data is supplied by Pillar 9â„¢ MLSÂ® System. Pillar 9â„¢ is the owner of the copyright in its MLSÂ® System. Data is deemed reliable but is not guaranteed accurate by Pillar 9â„¢. The trademarks MLSÂ®, Multiple Listing ServiceÂ® and the associated logos are owned by The Canadian Real Estate Association (CREA) and identify the quality of services provided by real estate professionals who are members of CREA. Used under license.