

# \$719,900 - 63 Castlefall Grove Ne, Calgary

MLS® #A2233954

**\$719,900**

4 Bedroom, 3.00 Bathroom, 1,289 sqft  
Residential on 0.13 Acres

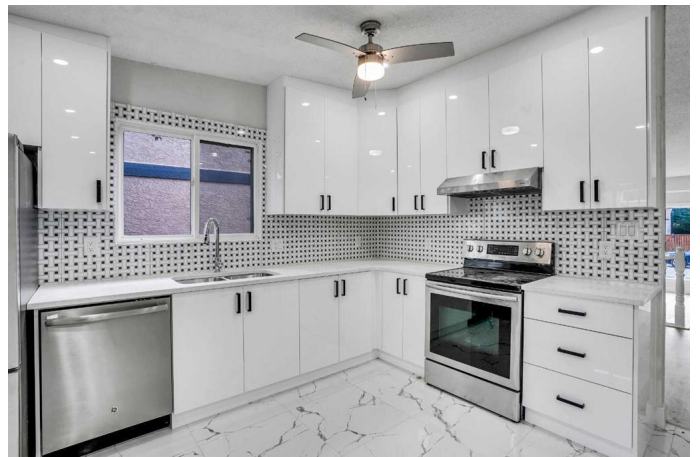
Castleridge, Calgary, Alberta

Discover this fully renovated, spacious home in the sought-after Castleridge Estate area. This immaculate property features four bedrooms and three bathrooms. The expansive living and dining rooms boast cathedral ceilings and a beautiful bay window. The brand-new kitchen, complete with glossy white cabinetry, quartz countertops and stainless steel appliances, is complemented by a bright eating area with a bay window that overlooks a large covered deck. This outdoor space is perfect for entertaining and weekend family gatherings, The walkout lower level offers a cozy family room with a stone-faced gas fireplace, a large fourth bedroom, and a four-piece bathroom. Notable updates include a completely renovated kitchen, fresh paint, new flooring, updated washrooms, modern doors, baseboards, a new roof, and a new garage door. The basement has been enhanced with two egress windows, all completed with city permits for your peace of mind. This home is conveniently located near bus routes, schools, and shopping, and also includes a double attached garage.

Built in 1980

## Essential Information

MLS® #	A2233954
Price	\$719,900



Bedrooms	4
Bathrooms	3.00
Full Baths	3
Square Footage	1,289
Acres	0.13
Year Built	1980
Type	Residential
Sub-Type	Detached
Style	4 Level Split
Status	Active

### **Community Information**

Address	63 Castlefall Grove Ne
Subdivision	Castleridge
City	Calgary
County	Calgary
Province	Alberta
Postal Code	T3J 1L1

### **Amenities**

Parking Spaces	4
Parking	Double Garage Attached
# of Garages	2

### **Interior**

Interior Features	Ceiling Fan(s), Quartz Counters
Appliances	Dishwasher, Electric Range, Range Hood, Washer/Dryer
Heating	Fireplace(s), Forced Air, Natural Gas
Cooling	None
Fireplace	Yes
# of Fireplaces	1
Fireplaces	Gas
Has Basement	Yes
Basement	Exterior Entry, Partial, Partially Finished

### **Exterior**

Exterior Features	Garden, Private Entrance, Storage
Lot Description	Back Yard, Few Trees, Rectangular Lot
Roof	Asphalt Shingle

Construction	Brick, Vinyl Siding
Foundation	Poured Concrete

### **Additional Information**

Date Listed	June 23rd, 2025
Days on Market	10
Zoning	R-CG

### **Listing Details**

Listing Office	Royal LePage METRO
----------------	--------------------

Data is supplied by Pillar 9â„¢ MLSÂ® System. Pillar 9â„¢ is the owner of the copyright in its MLSÂ® System. Data is deemed reliable but is not guaranteed accurate by Pillar 9â„¢. The trademarks MLSÂ®, Multiple Listing ServiceÂ® and the associated logos are owned by The Canadian Real Estate Association (CREA) and identify the quality of services provided by real estate professionals who are members of CREA. Used under license.