

# \$372,000 - 66 Sage Hill Passage Passage Nw, Calgary

MLS® #A2234021

**\$372,000**

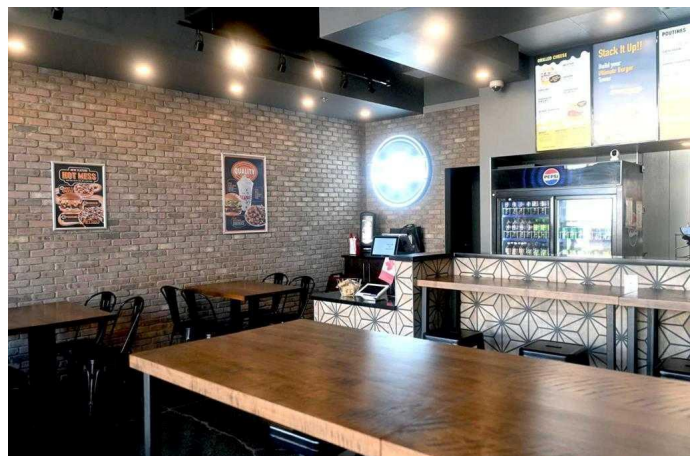
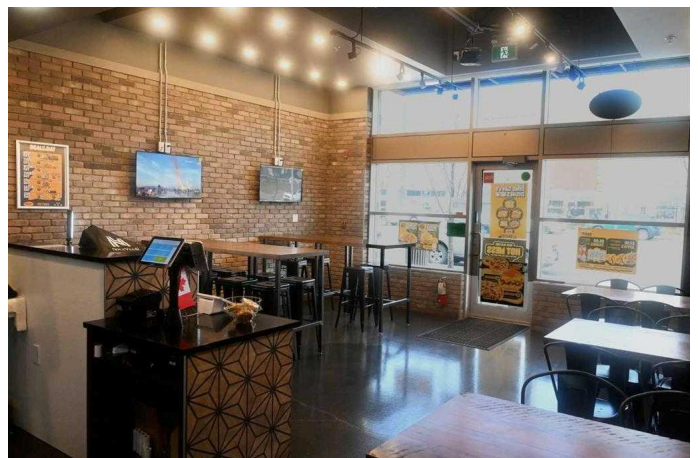
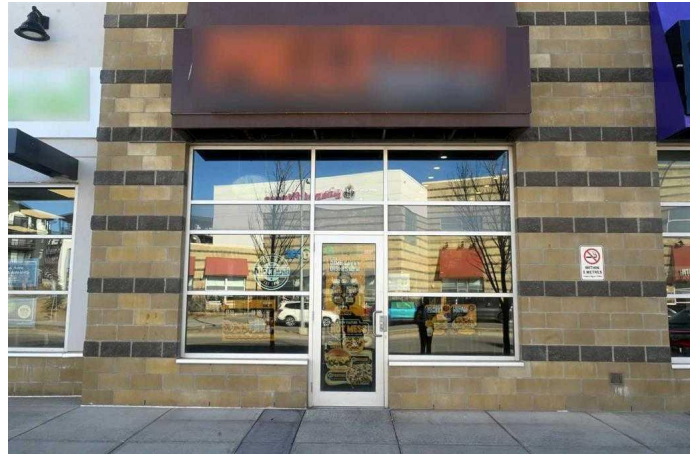
0 Bedroom, 0.00 Bathroom,  
Commercial on 0.00 Acres

Sage Hill, Calgary, Alberta

Exciting opportunity to acquire a recently built, fully operational Sandwich & Burger franchise in the vibrant and growing community of Sage Hill NW. This newly built restaurant, less than a year old, offers a turnkey opportunity with modern leasehold improvements, all-new branded appliances, a 25-seat dining area, and a liquor license to boost revenue potential. Strategically located in a busy shopping plaza surrounded by new residential developments, the business has shown consistent growth and is steadily building a loyal customer base. Whether you're an investor looking to take over a proven operation or an entrepreneur with your own food concept, this flexible space is ready to support your vision. This is an assignment of lease and sale of business only. No real property is included. Confidentiality agreement required and available in supplements. Please do not approach staff or visit the business without scheduling an appointment.

## Essential Information

MLS® #	A2234021
Price	\$372,000
Bathrooms	0.00
Acres	0.00
Type	Commercial
Sub-Type	Retail
Status	Active



## Community Information

Address	66 Sage Hill Passage Passage Nw
Subdivision	Sage Hill
City	Calgary
County	Calgary
Province	Alberta
Postal Code	T3R 1J1

## Additional Information

Date Listed	June 24th, 2025
Days on Market	21

## Listing Details

Listing Office	TREC The Real Estate Company
----------------	------------------------------

Data is supplied by Pillar 9â„¢ MLS® System. Pillar 9â„¢ is the owner of the copyright in its MLS® System. Data is deemed reliable but is not guaranteed accurate by Pillar 9â„¢. The trademarks MLS®, Multiple Listing Service® and the associated logos are owned by The Canadian Real Estate Association (CREA) and identify the quality of services provided by real estate professionals who are members of CREA. Used under license.