

\$219,900 - 356 Northlands Pointe Ne, Medicine Hat

MLS® #A2234161

\$219,900

2 Bedroom, 1.00 Bathroom, 1,058 sqft

Residential on 0.00 Acres

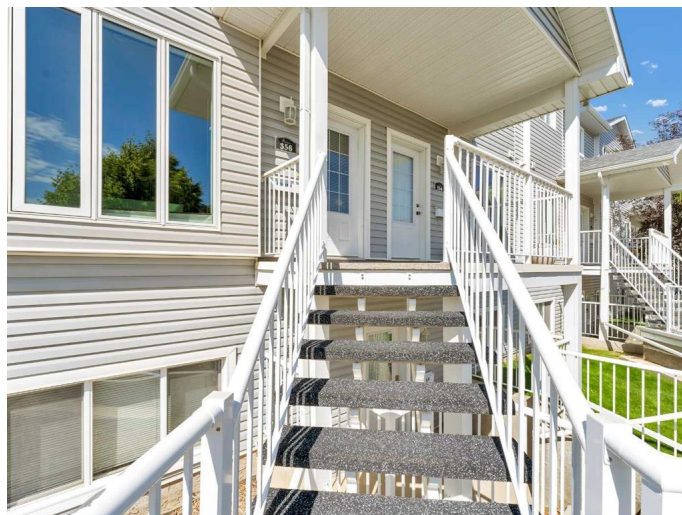
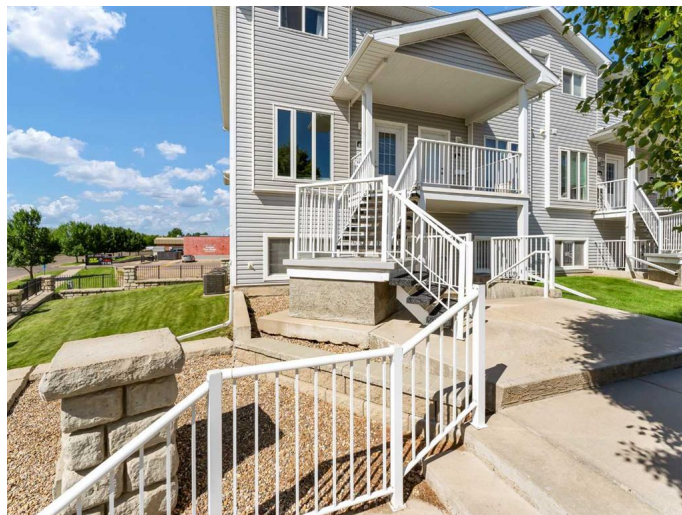
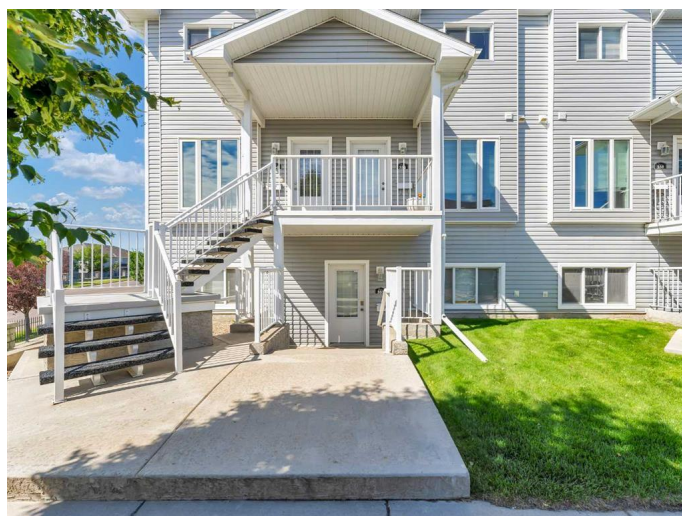
Northeast Crescent Heights, Medicine Hat, Alberta

This bright and welcoming 2-storey corner unit offers a functional layout and plenty of natural light. The main floor features a well-equipped kitchen with a full appliance package, granite countertops, maple cabinetry, and convenient bar seating that flows into the spacious dining area. The owners have transformed where a 2-piece bathroom could go, into a thoughtfully designed pantry, providing excellent additional storage. The plumbing remains intact, offering the option to convert it back into a bathroom if desired. Upstairs, youâ€™™ll find two generously sized bedrooms, including a primary bedroom with a walk-in closet and upgraded blinds. Neutral colors throughout create a warm, move-in-ready atmosphere. Enjoy the convenience of two dedicated front parking stalls, a private rear balcony with additional storage, and low-maintenance living. Ideally located close to schools, parks, shopping, public transit, and the Family Leisure Centre, this home is perfect for first-time buyers, downsizers, or investors.

Built in 2007

Essential Information

| | |
|-----------|-----------|
| MLS® # | A2234161 |
| Price | \$219,900 |
| Bedrooms | 2 |
| Bathrooms | 1.00 |



| | |
|----------------|---------------|
| Full Baths | 1 |
| Square Footage | 1,058 |
| Acres | 0.00 |
| Year Built | 2007 |
| Type | Residential |
| Sub-Type | Row/Townhouse |
| Style | 2 Storey |
| Status | Active |

Community Information

| | |
|-------------|----------------------------|
| Address | 356 Northlands Pointe Ne |
| Subdivision | Northeast Crescent Heights |
| City | Medicine Hat |
| County | Medicine Hat |
| Province | Alberta |
| Postal Code | T1C0C2 |

Amenities

| | |
|----------------|-------|
| Amenities | None |
| Parking Spaces | 2 |
| Parking | Stall |

Interior

| | |
|-------------------|---|
| Interior Features | Pantry, Vinyl Windows, Walk-In Closet(s) |
| Appliances | Dishwasher, Microwave, Refrigerator, Stove(s), Washer/Dryer, Window Coverings |
| Heating | Forced Air |
| Cooling | Central Air |
| Basement | None |

Exterior

| | |
|-------------------|-----------------|
| Exterior Features | Storage |
| Lot Description | Street Lighting |
| Roof | Asphalt Shingle |
| Construction | Mixed |
| Foundation | None |

Additional Information

| | |
|-------------|-----------------|
| Date Listed | June 28th, 2025 |
|-------------|-----------------|

| | |
|----------------|------|
| Days on Market | 9 |
| Zoning | R-MD |

Listing Details

| | |
|----------------|-------------------------------|
| Listing Office | ROYAL LEPAGE COMMUNITY REALTY |
|----------------|-------------------------------|

Data is supplied by Pillar 9â„¢ MLS® System. Pillar 9â„¢ is the owner of the copyright in its MLS® System. Data is deemed reliable but is not guaranteed accurate by Pillar 9â„¢. The trademarks MLS®, Multiple Listing Service® and the associated logos are owned by The Canadian Real Estate Association (CREA) and identify the quality of services provided by real estate professionals who are members of CREA. Used under license.