

\$211,000 - 220, 7180 80 Avenue Ne, Calgary

MLS® #A2234932

\$211,000

1 Bedroom, 1.00 Bathroom, 575 sqft

Residential on 0.00 Acres

Saddle Ridge, Calgary, Alberta

1 bedroom unit located on the 2nd floor. This unit shows pride of ownership & offers upgraded flooring, stainless steel appliances, open concept, deck, en suite laundry, underground parking & much more. The unit features a spacious kitchen with eating bar & a nook, good size living room that offers patio doors to the deck, there is also a good size bedroom & 4pc bath. Underground parking stall number 138. Close to green spaces, school, shopping, bus, L.R.T. & all other amenities.

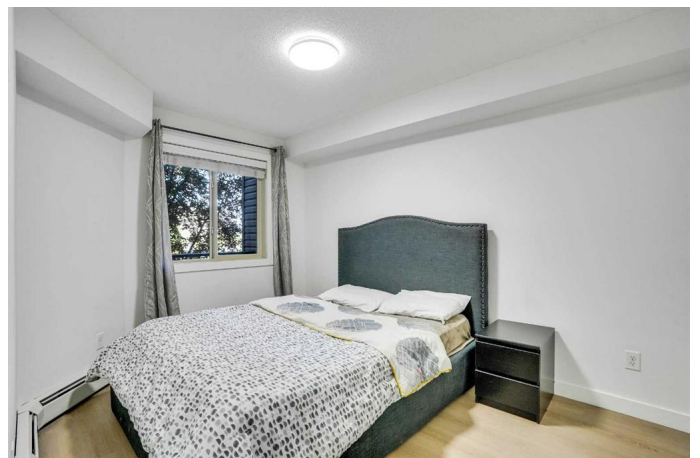
Built in 2012

Essential Information

MLS® #	A2234932
Price	\$211,000
Bedrooms	1
Bathrooms	1.00
Full Baths	1
Square Footage	575
Acres	0.00
Year Built	2012
Type	Residential
Sub-Type	Apartment
Style	Single Level Unit
Status	Active

Community Information

Address 220, 7180 80 Avenue Ne



Subdivision	Saddle Ridge
City	Calgary
County	Calgary
Province	Alberta
Postal Code	T3J 0N6

Amenities

Amenities	Parking
Parking Spaces	1
Parking	Underground

Interior

Interior Features	Kitchen Island, No Animal Home
Appliances	Dishwasher, Electric Stove, Microwave Hood Fan, Refrigerator, Washer/Dryer Stacked
Heating	Baseboard, Natural Gas
Cooling	None
# of Stories	4

Exterior

Exterior Features	Balcony
Construction	Stone, Vinyl Siding, Wood Frame

Additional Information

Date Listed	June 27th, 2025
Days on Market	60
Zoning	M-2

Listing Details

Listing Office	Real Estate Professionals Inc.
----------------	--------------------------------

Data is supplied by Pillar 9â„¢ MLS® System. Pillar 9â„¢ is the owner of the copyright in its MLS® System. Data is deemed reliable but is not guaranteed accurate by Pillar 9â„¢. The trademarks MLS®, Multiple Listing Service® and the associated logos are owned by The Canadian Real Estate Association (CREA) and identify the quality of services provided by real estate professionals who are members of CREA. Used under license.