

# \$1,499,900 - 43 Highway, Rural Grande Prairie No. 1, County of

---

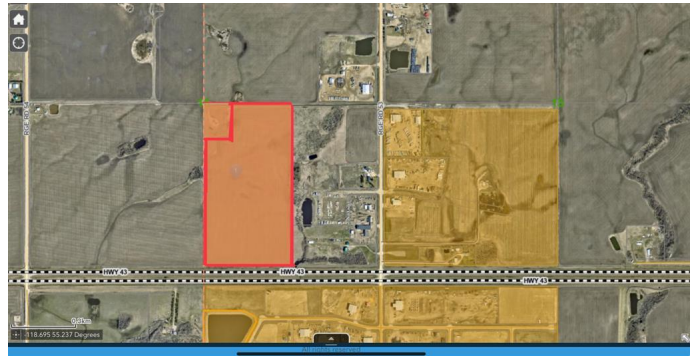
MLS® #A2234946

**\$1,499,900**

0 Bedroom, 0.00 Bathroom,  
Land on 74.13 Acres

NONE, Rural Grande Prairie No. 1, County of,  
Alberta

74.13 acres with HIGHWAY 43 frontage. Ideally located only 5mins east of Grande Prairie, AB on one of Alberta's busiest economic corridors. This parcel is aggressively priced at only \$20,000/acre. Options are endless with single user large industrial/commercial site, homesite with options to operate a business, industrial lot development and much more. Services are in the area and access road is ready to go. Situated close to other development in the area such as Hawker Industrial Park, RR53 industrial park, Ritchie Bros. Auction, MASTEC. Great piece of land/opportunity at a great price. Call a commercial realtor today for more information and let's turn your dreams into reality.



## Essential Information

MLS® #	A2234946
Price	\$1,499,900
Bathrooms	0.00
Acres	74.13
Type	Land
Sub-Type	Commercial Land
Status	Active

## Community Information

Address	43 Highway
Subdivision	NONE
City	Rural Grande Prairie No. 1, County of
County	Grande Prairie No. 1, County of
Province	Alberta
Postal Code	T8X 4J5

### **Additional Information**

Date Listed	June 27th, 2025
Days on Market	61
Zoning	GC

### **Listing Details**

Listing Office	RE/MAX Grande Prairie
----------------	-----------------------

Data is supplied by Pillar 9â„¢ MLS® System. Pillar 9â„¢ is the owner of the copyright in its MLS® System. Data is deemed reliable but is not guaranteed accurate by Pillar 9â„¢. The trademarks MLS®, Multiple Listing Service® and the associated logos are owned by The Canadian Real Estate Association (CREA) and identify the quality of services provided by real estate professionals who are members of CREA. Used under license.