

\$10 - 128, 4410 52 Avenue, Lloydminster

MLS® #A2234952

\$10

0 Bedroom, 0.00 Bathroom,
Commercial on 0.00 Acres

NONE, Lloydminster, Alberta

Wide open second floor space with both a staircase and elevator overlooking the city of Lloydminster. HWY 16 frontage across the street from Lloyd Mall and Superstore. This blank canvas is available for your personal touches to suit all of your business needs.

Built in 1987

Essential Information

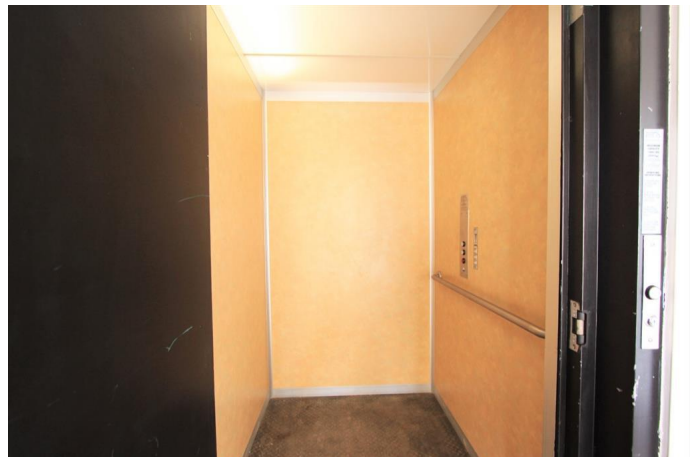
MLS® #	A2234952
Price	\$10
Bathrooms	0.00
Acres	0.00
Year Built	1987
Type	Commercial
Sub-Type	Retail
Status	Active

Community Information

Address	128, 4410 52 Avenue
Subdivision	NONE
City	Lloydminster
County	Lloydminster
Province	Alberta
Postal Code	T9V 1T4

Interior

Heating	Varies by Unit
Cooling	Central Air



Exterior

Lot Description	City Lot, Street Lighting, Near Shopping Center, Paved
Construction	Wood Frame
Foundation	Wood

Additional Information

Date Listed	June 26th, 2025
Days on Market	68

Listing Details

Listing Office	COLDWELL BANKER - CITY SIDE REALTY
----------------	------------------------------------

Data is supplied by Pillar 9â„¢ MLS® System. Pillar 9â„¢ is the owner of the copyright in its MLS® System. Data is deemed reliable but is not guaranteed accurate by Pillar 9â„¢. The trademarks MLS®, Multiple Listing Service® and the associated logos are owned by The Canadian Real Estate Association (CREA) and identify the quality of services provided by real estate professionals who are members of CREA. Used under license.