

\$3,900 - 1227 38 Avenue Ne, Calgary

MLS® #A2234990

\$3,900

0 Bedroom, 0.00 Bathroom,
Commercial on 0.00 Acres

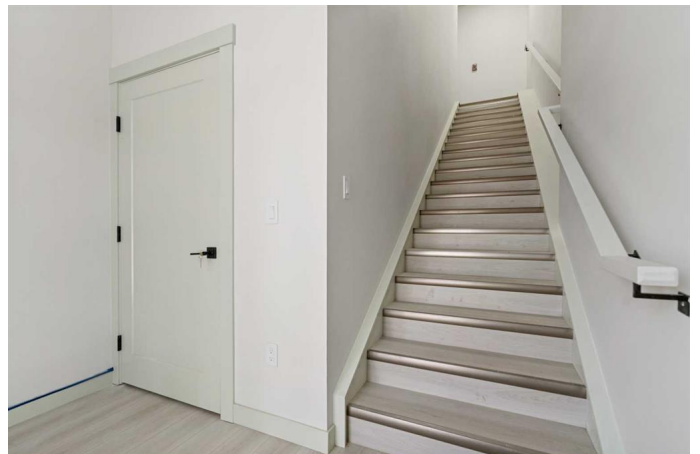
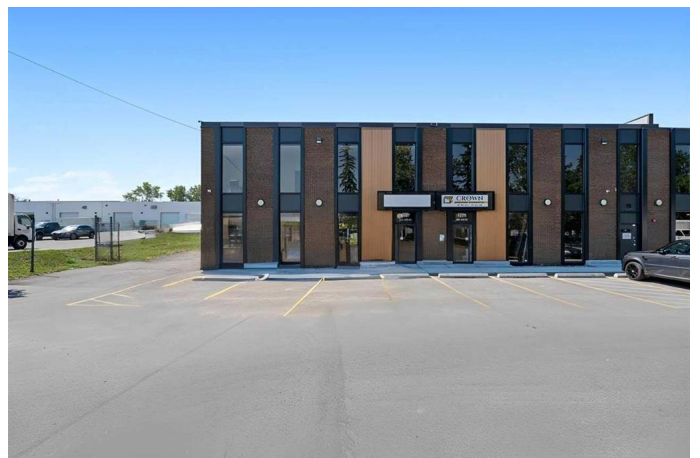
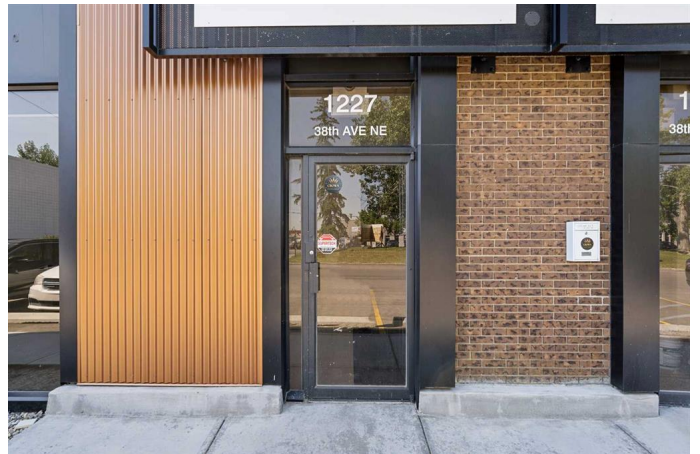
McCall, Calgary, Alberta

Located at 1227 38 Avenue NE, this brand-new second-floor office space is now available for lease and offers the perfect setup for a professional business environment. The layout includes six spacious private offices plus a large boardroom, kitchen area making it ideal for teams that require both individual workspaces and collaborative meeting areas. With modern finishes, ample natural light, and a professional design, the space provides a fresh and welcoming atmosphere. Conveniently situated with quick access to Deerfoot Trail, McKnight Boulevard, and Calgary International Airport, Calgary downtown it ensures excellent connectivity for clients and staff alike. The building features a private entrance, ample surface parking, and is well-suited for various professional uses such as law firms, accountants, consultants, or tech companies. This is a turnkey leasing opportunity in a sought-after NE Calgary location—available for immediate possession.

Built in 1977

Essential Information

MLS® #	A2234990
Price	\$3,900
Bathrooms	0.00
Acres	0.00
Year Built	1977
Type	Commercial



Sub-Type	Office
Status	Active

Community Information

Address	1227 38 Avenue Ne
Subdivision	McCall
City	Calgary
County	Calgary
Province	Alberta
Postal Code	T2T 2J3

Additional Information

Date Listed	June 26th, 2025
Days on Market	15

Listing Details

Listing Office	RE/MAX Complete Realty
----------------	------------------------

Data is supplied by Pillar 9â„¢ MLS® System. Pillar 9â„¢ is the owner of the copyright in its MLS® System. Data is deemed reliable but is not guaranteed accurate by Pillar 9â„¢. The trademarks MLS®, Multiple Listing Service® and the associated logos are owned by The Canadian Real Estate Association (CREA) and identify the quality of services provided by real estate professionals who are members of CREA. Used under license.