

\$15 - 130, 4410 52 Avenue, Lloydminster

MLS® #A2235297

\$15

0 Bedroom, 0.00 Bathroom,
Commercial on 0.00 Acres

NONE, Lloydminster, Alberta

A great business opportunity! Highly visible
4,800 square feet of lease space in Plaza 44!
Perfect spot for a pub or a restaurant with
plenty of parking and a high traffic location just
off of HWY 16!

Built in 1987

Essential Information

| | |
|------------|------------|
| MLS® # | A2235297 |
| Price | \$15 |
| Bathrooms | 0.00 |
| Acres | 0.00 |
| Year Built | 1987 |
| Type | Commercial |
| Sub-Type | Retail |
| Status | Active |

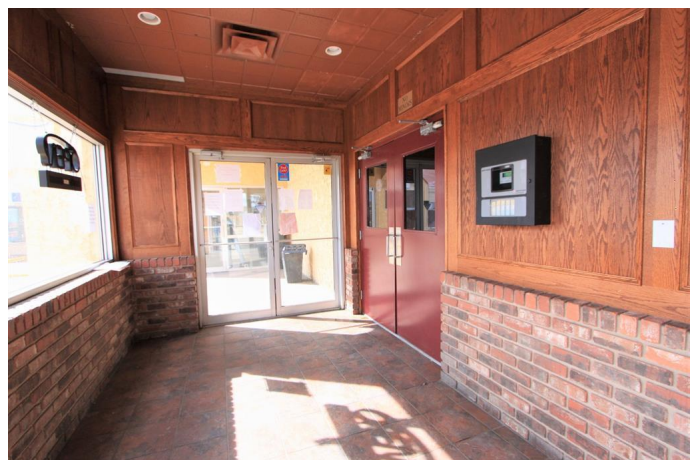
Community Information

| | |
|-------------|---------------------|
| Address | 130, 4410 52 Avenue |
| Subdivision | NONE |
| City | Lloydminster |
| County | Lloydminster |
| Province | Alberta |
| Postal Code | T9V 1T4 |

Interior

| | |
|---------|----------------|
| Heating | Varies by Unit |
| Cooling | Central Air |

Exterior



| | |
|-----------------|--|
| Lot Description | City Lot, Street Lighting, Near Shopping Center, Paved |
| Construction | Wood Frame |
| Foundation | Wood |

Additional Information

| | |
|----------------|-----------------|
| Date Listed | June 27th, 2025 |
| Days on Market | 131 |
| Zoning | C2 |

Listing Details

| | |
|----------------|------------------------------------|
| Listing Office | COLDWELL BANKER - CITY SIDE REALTY |
|----------------|------------------------------------|

Data is supplied by Pillar 9â„¢ MLSÂ® System. Pillar 9â„¢ is the owner of the copyright in its MLSÂ® System. Data is deemed reliable but is not guaranteed accurate by Pillar 9â„¢. The trademarks MLSÂ®, Multiple Listing ServiceÂ® and the associated logos are owned by The Canadian Real Estate Association (CREA) and identify the quality of services provided by real estate professionals who are members of CREA. Used under license.