

\$99,900 - No. 2 Honey Lane Estates, Rural Fairview No. 136, M.D. of

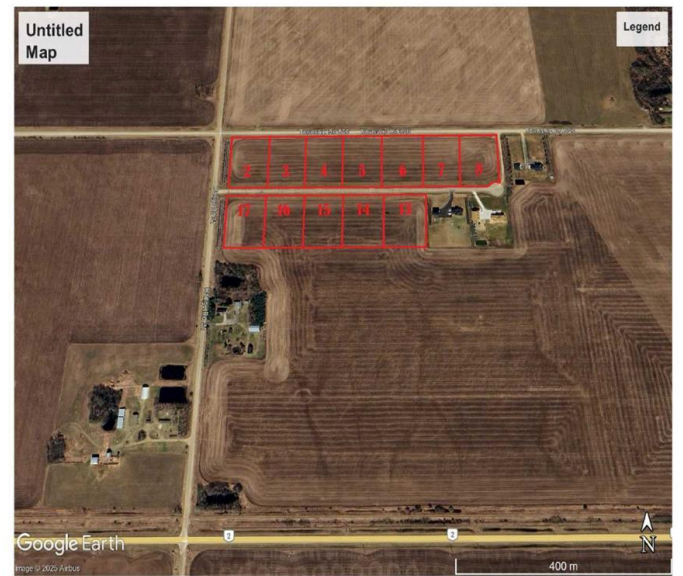
MLS® #A2235351

\$99,900

0 Bedroom, 0.00 Bathroom,
Land on 2.89 Acres

NONE, Rural Fairview No. 136, M.D. of,
Alberta

Discover your dream homesite! This stunning, almost 3-acre parcel offers unparalleled potential. Enjoy breathtaking views and a prime location just 1 mile from Fairview. Benefit from modern infrastructure: power and natural gas at the property line, water co-op hookup available, and sewage approved for field/mound systems. Plus, enjoy the convenience of a paved access road and streetlights. Excellent drainage ensures lasting value. Build your future here! Call Your Realtor and make your dream a reality today!



Essential Information

MLS® #	A2235351
Price	\$99,900
Bathrooms	0.00
Acres	2.89
Type	Land
Sub-Type	Residential Land
Status	Active

Community Information

Address	No. 2 Honey Lane Estates
Subdivision	NONE
City	Rural Fairview No. 136, M.D. of
County	Fairview No. 136, M.D. of

Province	Alberta
Postal Code	T0H 1L0

Additional Information

Date Listed	July 3rd, 2025
Days on Market	50
Zoning	Country Residential

Listing Details

Listing Office	Royal LePage Mighty Peace Realty
----------------	----------------------------------

Data is supplied by Pillar 9â„¢ MLS® System. Pillar 9â„¢ is the owner of the copyright in its MLS® System. Data is deemed reliable but is not guaranteed accurate by Pillar 9â„¢. The trademarks MLS®, Multiple Listing Service® and the associated logos are owned by The Canadian Real Estate Association (CREA) and identify the quality of services provided by real estate professionals who are members of CREA. Used under license.