

\$309,900 - 312, 2020 32 Street S, Lethbridge

MLS® #A2236599

\$309,900

1 Bedroom, 1.00 Bathroom, 927 sqft

Residential on 0.00 Acres

Redwood, Lethbridge, Alberta

Welcome to #312 at the Sierras of Courtyard Terrace! This fantastic one bedroom with one den condo offers 927sqft of living space with the addition of a beautiful covered deck overlooking 20th Avenue S. The living space is open and creates a welcoming space between the kitchen and large living room. And you'll be able to enjoy all of the amenities that the Sierras offers to it's residents. Games room on the second floor, aquatic facility with pool, sauna, and steam room, theatre room, wood working shop, library, and many more.

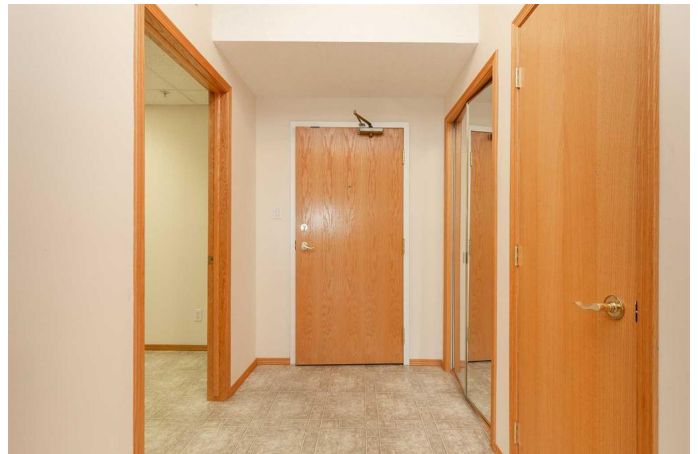
Built in 2002

Essential Information

MLS® #	A2236599
Price	\$309,900
Bedrooms	1
Bathrooms	1.00
Full Baths	1
Square Footage	927
Acres	0.00
Year Built	2002
Type	Residential
Sub-Type	Apartment
Style	Single Level Unit
Status	Active

Community Information

Address 312, 2020 32 Street S



Subdivision	Redwood
City	Lethbridge
County	Lethbridge
Province	Alberta
Postal Code	T1K 7T9

Amenities

Amenities	Elevator(s), Laundry, Parking, Storage
Parking Spaces	1
Parking	Titled, Underground

Interior

Interior Features	Laminate Counters, No Animal Home, No Smoking Home, Open Floorplan, See Remarks, Vinyl Windows
Appliances	See Remarks
Heating	Boiler
Cooling	Central Air
# of Stories	4

Exterior

Exterior Features	Courtyard
Construction	Wood Frame

Additional Information

Date Listed	July 7th, 2025
Days on Market	1
Zoning	C-S

Listing Details

Listing Office	Lethbridge Real Estate.com
----------------	----------------------------

Data is supplied by Pillar 9â„¢ MLS® System. Pillar 9â„¢ is the owner of the copyright in its MLS® System. Data is deemed reliable but is not guaranteed accurate by Pillar 9â„¢. The trademarks MLS®, Multiple Listing Service® and the associated logos are owned by The Canadian Real Estate Association (CREA) and identify the quality of services provided by real estate professionals who are members of CREA. Used under license.