

\$115,000 - 4a Township 591 Range Road 114b, Rural Woodlands County

MLS® #A2237323

\$115,000

0 Bedroom, 0.00 Bathroom,
Land on 5.07 Acres

NONE, Rural Woodlands County, Alberta

One of the last bare parcels of land left in this subdivision with no developer restrictions. A pretty piece of land, only a few minutes east of Whitecourt on Antler Road. Total of 5.07 acres of land with trees and an approach. The land is mostly level with good options for building. This subdivision backs onto Beaver Creek. Utilities in the subdivision. Start planning your dream home or weekend retreat.

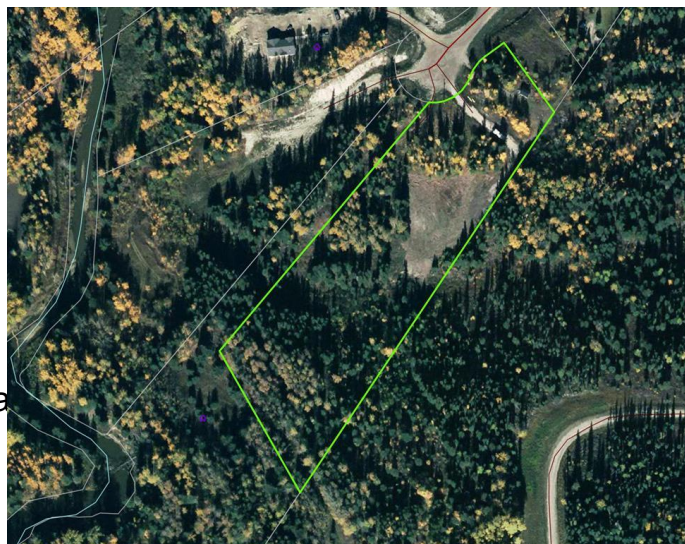
Essential Information

MLS® #	A2237323
Price	\$115,000
Bathrooms	0.00
Acres	5.07
Type	Land
Sub-Type	Residential Land
Status	Active

Community Information

Address	4a Township 591 Range Road
Subdivision	NONE
City	Rural Woodlands County
County	Woodlands County
Province	Alberta
Postal Code	T7S 1A0

Amenities



Utilities

Natural Gas Available

Additional Information

Date Listed

July 4th, 2025

Days on Market

66

Zoning

CR

Listing Details

Listing Office

ROYAL LEPAGE MODERN REALTY

Data is supplied by Pillar 9â„¢ MLS® System. Pillar 9â„¢ is the owner of the copyright in its MLS® System. Data is deemed reliable but is not guaranteed accurate by Pillar 9â„¢. The trademarks MLS®, Multiple Listing Service® and the associated logos are owned by The Canadian Real Estate Association (CREA) and identify the quality of services provided by real estate professionals who are members of CREA. Used under license.