

\$605,000 - 122, 300 Palliser Lane E, Canmore

MLS® #A2237440

\$605,000

0 Bedroom, 0.00 Bathroom, 732 sqft

Multi-Family on 0.00 Acres

Benchlands, Canmore, Alberta

Weekend get away or full time living in the mountains. This building has a gyn for you convenience. Location is close to trails and free bus service to go downtown Canmore. 2 bedroom, and 1 bull bathroom. Open concept from kitchen to living room with a gas fireplace. On ground floor with a sizeable covered deck and views of our famous Three Sisters mountain range.

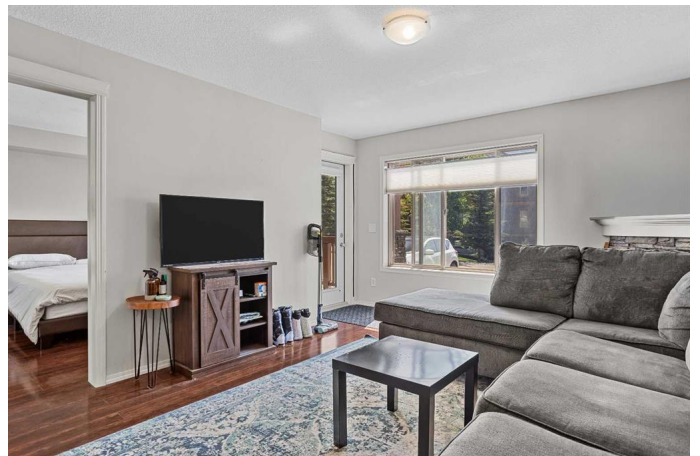
Built in 2009

Essential Information

MLS® #	A2237440
Price	\$605,000
Bathrooms	0.00
Square Footage	732
Acres	0.00
Year Built	2009
Type	Multi-Family
Sub-Type	Apartment
Style	Single Level Unit
Status	Active

Community Information

Address	122, 300 Palliser Lane E
Subdivision	Benchlands
City	Canmore
County	Bighorn No. 8, M.D. of
Province	Alberta



Postal Code T1W 0H5

Amenities

Amenities Bicycle Storage, Elevator(s), Fitness Center

Utilities Heating Paid For, Cable Available, Garbage Collection, Natural Gas Available

Parking Spaces 1

Parking Parking Pad

Interior

Appliances Built-In Refrigerator, Dishwasher, Electric Range, Washer/Dryer

Heating Forced Air, Natural Gas

Fireplace Yes

of Fireplaces 1

Fireplaces Gas, Living Room, Factory Built

of Stories 4

Basement None

Exterior

Construction Concrete, Wood Frame

Foundation Poured Concrete

Additional Information

Date Listed July 3rd, 2025

Days on Market 1

Zoning 0050

HOA Fees 484

HOA Fees Freq. MON

Listing Details

Listing Office CENTURY 21 NORDIC REALTY

Data is supplied by Pillar 9â„¢ MLS® System. Pillar 9â„¢ is the owner of the copyright in its MLS® System. Data is deemed reliable but is not guaranteed accurate by Pillar 9â„¢. The trademarks MLS®, Multiple Listing Service® and the associated logos are owned by The Canadian Real Estate Association (CREA) and identify the quality of services provided by real estate professionals who are members of CREA. Used under license.