

\$239,900 - 610 Center Street, Empress

MLS® #A2237479

\$239,900

4 Bedroom, 2.00 Bathroom, 1,008 sqft

Residential on 0.28 Acres

NONE, Empress, Alberta

Welcome to this exceptional 4-bedroom, 1,008 sq ft bungalow situated on a generous 12,000 sq ft (0.275-acre) lot in the tranquil community of Empress, Alberta. Offering 2+2 bedrooms, 2 bathrooms, and a fully finished basement, this home provides excellent living space and has been meticulously maintained with updates including newer shingles (2018), a 2-tonne central A/C unit, high-efficiency furnace, new hot water tank (2024), pex water lines, and a reverse osmosis system. The expansive property features a 24 x 25 ft heated double detached garage with 9-ft ceilings and 220 wiring, two Kodiak shelters (20 x 30 and 12 x 20), an 8.5 x 14 greenhouse, two large sheds, and ample parking for vehicles, trailers, boats, and RVs. Nestled near the Alberta-Saskatchewan border, Empress is a friendly, scenic community celebrated for its wide-open skies and stunning river valley views—a perfect setting for those seeking quiet, outdoor living where life slows down. Contact your local REALTOR® today to schedule a private viewing!

Built in 1964

Essential Information

MLS® #	A2237479
Price	\$239,900
Bedrooms	4



Bathrooms	2.00
Full Baths	2
Square Footage	1,008
Acres	0.28
Year Built	1964
Type	Residential
Sub-Type	Detached
Style	Bungalow
Status	Active

Community Information

Address	610 Center Street
Subdivision	NONE
City	Empress
County	Special Area 2
Province	Alberta
Postal Code	T0J 1E0

Amenities

Parking Spaces	6
Parking	Garage Door Opener, Heated Garage, Off Street, 220 Volt Wiring, Boat, Double Garage Detached, Insulated, RV Access/Parking
# of Garages	2

Interior

Interior Features	See Remarks, Storage
Appliances	Dishwasher, Range Hood, Refrigerator, Stove(s)
Heating	Forced Air, Natural Gas
Cooling	Central Air
Has Basement	Yes
Basement	Finished, Full

Exterior

Exterior Features	Private Yard, Misting System, Storage
Lot Description	Back Yard, Landscaped, Level, Low Maintenance Landscape
Roof	Asphalt Shingle
Construction	Mixed
Foundation	Poured Concrete

Additional Information

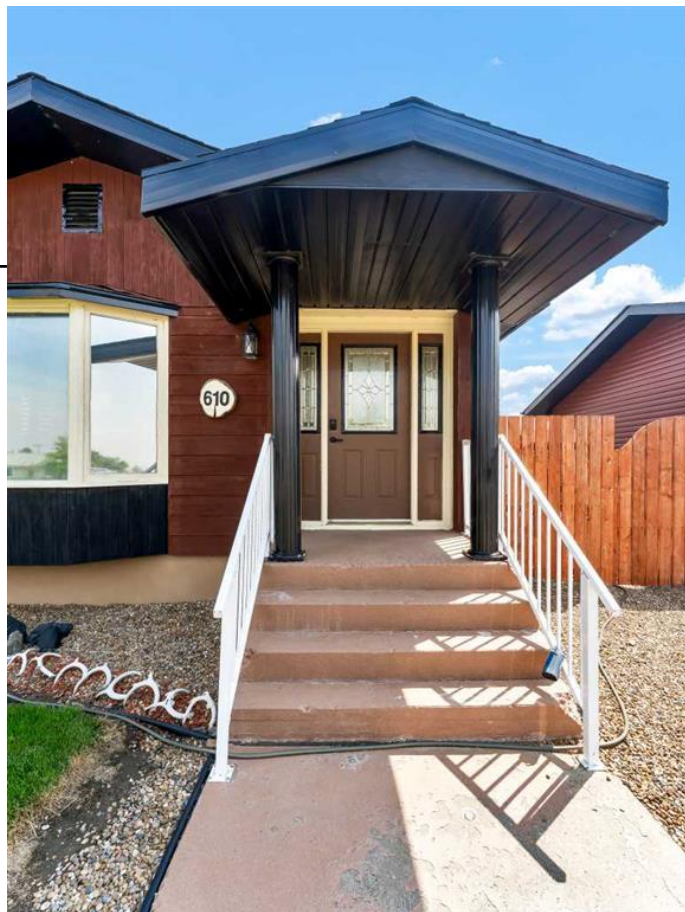
Date Listed July 22nd, 2025

Days on Market 5

Zoning R

Listing Details

Listing Office RE/MAX MEDALTA REAL EST



Data is supplied by Pillar 9â„¢ MLSÂ® System. Pillar 9â„¢ is the owner of the copyright in its MLSÂ® System. Data is deemed reliable but is not guaranteed accurate by Pillar 9â„¢. The trademarks MLSÂ®, Multiple Listing ServiceÂ® and the associated logos are owned by The Canadian Real Estate Association (CREA) and identify the quality of services provided by real estate professionals who are members of CREA. Used under license.