

\$479,900 - 51 Martinridge Grove Ne, Calgary

MLS® #A2237603

\$479,900

4 Bedroom, 3.00 Bathroom, 1,283 sqft

Residential on 0.07 Acres

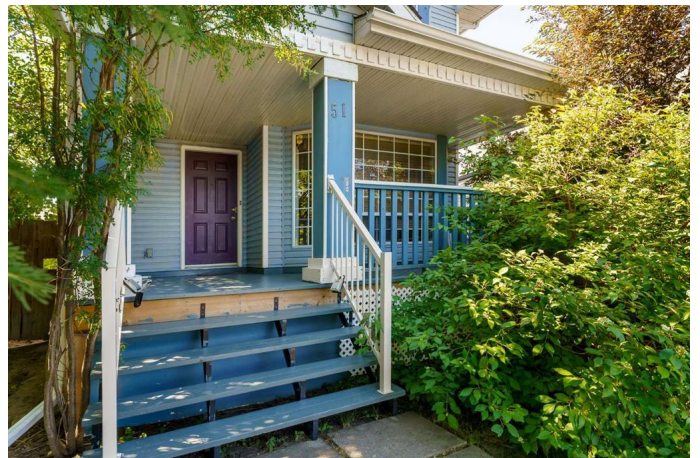
Martindale, Calgary, Alberta

3 BEDROOM/2.5 BATHROOMS just under 1300 SQ.FT above grade BASEMENT SUITE(illegal) WITH A SEPARATE ENTRANCE***2 CAR DETACHED GARAGE***Very beautiful MATURE TREES ON QUIET STREET***Playground for kids just a few doors down/Elementary school is short walking distance/Very close proximity to Superstore and LRT. With a little bit of TLC this property will absolutely shine. THIS IS THE BEST DEAL IN ALL OF THE NORTHEAST! Come view it now before it's too late! Great opportunity to make money NOW!

Built in 1992

Essential Information

MLS® #	A2237603
Price	\$479,900
Bedrooms	4
Bathrooms	3.00
Full Baths	2
Half Baths	1
Square Footage	1,283
Acres	0.07
Year Built	1992
Type	Residential
Sub-Type	Detached
Style	2 Storey
Status	Active



Community Information

Address	51 Martinridge Grove Ne
Subdivision	Martindale
City	Calgary
County	Calgary
Province	Alberta
Postal Code	T3J 3M2

Amenities

Parking Spaces	2
Parking	Double Garage Detached, Garage Faces Rear
# of Garages	2

Interior

Interior Features	See Remarks
Appliances	Dishwasher, Dryer, Refrigerator, Stove(s), Washer
Heating	Forced Air, Natural Gas
Cooling	None
Has Basement	Yes
Basement	Finished, Full

Exterior

Exterior Features	None
Lot Description	Back Lane
Roof	Asphalt Shingle
Construction	Vinyl Siding, Wood Frame
Foundation	Poured Concrete

Additional Information

Date Listed	July 8th, 2025
Days on Market	3
Zoning	R-CG

Listing Details

Listing Office	RE/MAX First
----------------	--------------

Data is supplied by Pillar 9â„¢ MLS® System. Pillar 9â„¢ is the owner of the copyright in its MLS® System. Data is deemed reliable but is not guaranteed accurate by Pillar 9â„¢. The trademarks MLS®, Multiple Listing Service® and the associated logos are owned by The Canadian Real Estate Association (CREA) and identify the quality of services provided by real estate professionals who are members of CREA. Used under license.