

\$279,900 - 108 Cypress Way Se, Medicine Hat

MLS® #A2237758

\$279,900

3 Bedroom, 2.00 Bathroom, 1,200 sqft
Residential on 0.16 Acres

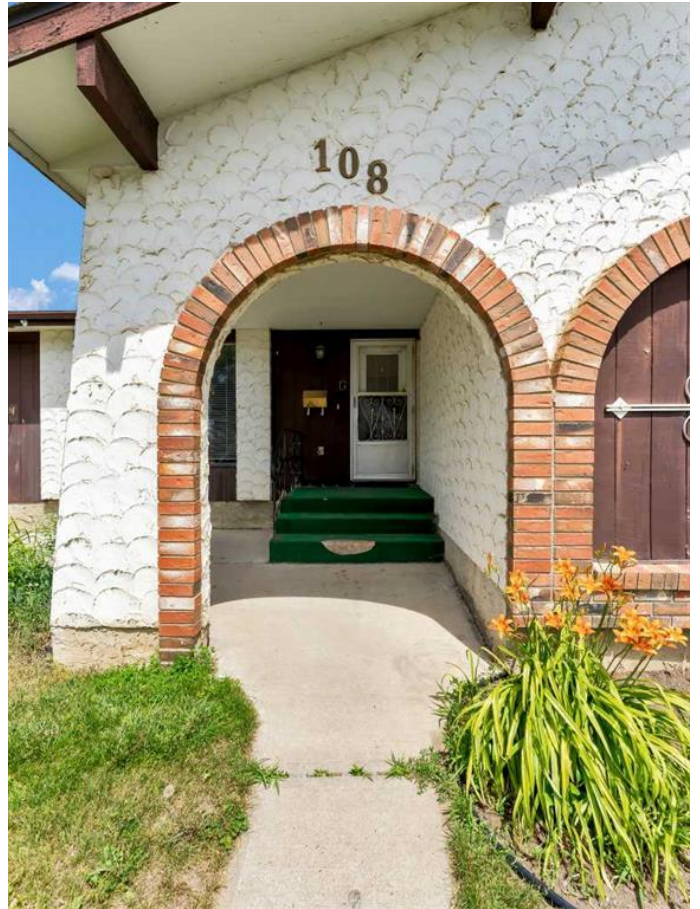
Southview-Park Meadows, Medicine Hat,
Alberta

Welcome to your dream home nestled in a charming bungalow, perfectly situated in one of the great neighborhoods in town! This delightful residence offers an ideal blend of comfort, convenience, and opportunity, making it the perfect setting for your next chapter.

As you step inside this inviting 1200 sq ft haven, you'll immediately be captivated by the spacious living room, bathed in natural light and designed for both relaxation and entertaining. Picture cozy evenings spent with loved ones, laughter echoing off the walls, and memories being created in this warm and welcoming space. The open layout seamlessly connects living, dining, and kitchen areas, inviting you to envision your own personal touch and style.

With three generous bedrooms, including a primary suite complete with a convenient half-bath, this home has been designed to accommodate your family's needs. Each room offers ample space and the flexibility to transform them into your perfect sanctuary, whether you envision a serene retreat or a vibrant guest room. The two full bathrooms (1 is downstairs) ensure that everyone has their own space to unwind and refresh, making mornings a breeze.

Step outside to discover a single garage with an attached carport, providing not just ample



storage but also the convenience of protecting your vehicles from the elements. The backyard is a canvas waiting for your creativity—imagine a serene garden, a play area for children, or the perfect outdoor entertaining space adorned with twinkling lights for gatherings under the stars.

The location couldn't be more ideal—just moments away from vibrant shopping destinations, delectable dining options, and delightful parks and the walking/biking trails. Enjoy the ease of suburban living while having all the amenities you desire right at your fingertips. This friendly neighborhood is not just a place to live; it's a community where you can create lasting connections and make unforgettable memories.

With tons of potential, this bungalow invites you to bring your vision to life. Whether you're a first-time buyer looking to settle down or an investor seeking a promising opportunity, this home promises to fulfill your aspirations. Don't miss out on the chance to claim this gem as your own—schedule a visit today and step into a world of possibilities!

Built in 1974

Essential Information

MLS® #	A2237758
Price	\$279,900
Bedrooms	3
Bathrooms	2.00
Full Baths	1
Half Baths	1
Square Footage	1,200
Acres	0.16
Year Built	1974
Type	Residential

Sub-Type	Detached
Style	Bungalow
Status	Active



Community Information

Address	108 Cypress Way Se
Subdivision	Southview-Park Meadows
City	Medicine Hat
County	Medicine Hat
Province	Alberta
Postal Code	T1B2G8

Amenities

Parking Spaces	2
Parking	Carport, Single Garage Detached
# of Garages	1

Interior

Interior Features	Open Floorplan
Appliances	Central Air Conditioner, Electric Stove, Microwave Hood Fan, Refrigerator, Washer/Dryer
Heating	High Efficiency, Forced Air, Natural Gas
Cooling	Central Air
Has Basement	Yes
Basement	Full, Partially Finished

Exterior

Exterior Features	Private Yard
Lot Description	Back Lane, Back Yard, City Lot
Roof	Asphalt Shingle
Construction	Brick, Stucco, Wood Frame, Wood Siding
Foundation	Poured Concrete

Additional Information

Date Listed	July 4th, 2025
Days on Market	2
Zoning	R-LD

Listing Details

Listing Office	SOURCE 1 REALTY CORP.
----------------	-----------------------

Data is supplied by Pillar 9â„¢ MLS® System. Pillar 9â„¢ is the owner of the copyright in its MLS® System. Data is deemed reliable but is not guaranteed accurate by Pillar 9â„¢. The trademarks MLS®, Multiple Listing Service® and the associated logos are owned by The Canadian Real Estate Association (CREA) and identify the quality of services provided by real estate professionals who are members of CREA. Used under license.