

\$899,000 - 8 Prairie Creek Close, Sundre

MLS® #A2237975

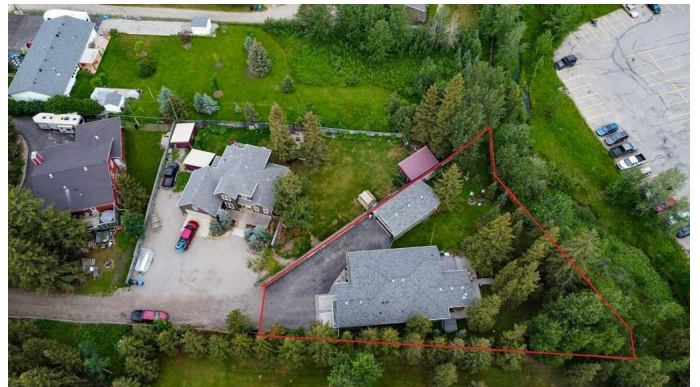
\$899,000

2 Bedroom, 2.00 Bathroom, 1,717 sqft

Residential on 0.35 Acres

NONE, Sundre, Alberta

COUNTRY LIVING IN TOWN...Sitting on .3 of an acre in the town of Sundre is this amazing, 6 year old, slab on grade, 1700 sq ft home. This custom built home was built with the best of everything in mind from the triple glazed, low E windows, to the premium leather granite countertops. The home features 2 bedrooms plus an office off the front(could also be used as a guest bedroom) 2 full bathrooms, an open concept kitchen/living area and a cozy family/tv room. The door in the family room takes you out onto your east deck for morning coffee and the hot tub. There's even a wood burning stove to cozy up to. The home and attached double off set garage have in floor heat with a high efficacy boiler. This stunning, high quality home was built with forever in mind and comes with extras like 40 year shingles, stamped concrete patios and a permeable asphalt driveway. But lets not forget every man's dream, the bonus 18' X 34' SHOP that can house up to 3 vehicles for the collector. ;) It even sports its own bathroom so truly a mancave. The private yard with the strategically placed decks give you the feeling of being somewhere in the country. Kick back in your lounge chair and listen to the birds singing, and the creek gurgling, while you enjoy your afternoon beverage. Or sit around with family and friends and enjoy the evening on the northwest deck watching the sun go down. If living in the country has been your dream but having the conveniences of town is paramount, then this



is definitely a MUST SEE. Properties like this gem don't come up very often. It's nothing short of AWESOME!!! Be sure to check out the VIDEO!!!

Built in 2019

Essential Information

MLS® #	A2237975
Price	\$899,000
Bedrooms	2
Bathrooms	2.00
Full Baths	2
Square Footage	1,717
Acres	0.35
Year Built	2019
Type	Residential
Sub-Type	Detached
Style	Bungalow
Status	Active

Community Information

Address	8 Prairie Creek Close
Subdivision	NONE
City	Sundre
County	Mountain View County
Province	Alberta
Postal Code	T0M1X0

Amenities

Parking Spaces	6
Parking	Double Garage Attached
# of Garages	5
Waterfront	Creek

Interior

Interior Features	Beamed Ceilings, Ceiling Fan(s), Central Vacuum, Granite Counters, High Ceilings, No Animal Home, No Smoking Home, Open Floorplan, Tankless Hot Water, Walk-In Closet(s)
-------------------	--

Appliances	Dishwasher, Dryer, Garage Control(s), Microwave Hood Fan, Stove(s), Tankless Water Heater, Washer, Window Coverings, Humidifier, Instant Hot Water
Heating	In Floor, Make-up Air
Cooling	Sep. HVAC Units
Fireplace	Yes
# of Fireplaces	1
Fireplaces	Family Room, Wood Burning
Basement	None

Exterior

Exterior Features	BBQ gas line, Fire Pit, Private Yard, Permeable Paving
Lot Description	Cul-De-Sac, Landscaped, Lawn, Many Trees, No Neighbours Behind, Paved, Pie Shaped Lot, Private, Secluded, Creek/River/Stream/Pond
Roof	Asphalt Shingle
Construction	Vinyl Siding, Wood Frame
Foundation	Slab

Additional Information

Date Listed	July 9th, 2025
Days on Market	2
Zoning	R1

Listing Details

Listing Office	CIR Realty
----------------	------------

Data is supplied by Pillar 9â„¢ MLS® System. Pillar 9â„¢ is the owner of the copyright in its MLS® System. Data is deemed reliable but is not guaranteed accurate by Pillar 9â„¢. The trademarks MLS®, Multiple Listing Service® and the associated logos are owned by The Canadian Real Estate Association (CREA) and identify the quality of services provided by real estate professionals who are members of CREA. Used under license.